

DTE Electric Company  
One Energy Plaza, 1635 WCB  
Detroit, MI 48226-1279



Breanne K. Reitzel  
(313) 235-9772  
breanne.reitzel@dteenergy.com

April 29, 2022

Ms. Lisa Felice  
Executive Secretary  
Michigan Public Service Commission  
7109 West Saginaw Highway  
Lansing, MI 48917

Re: In the matter, on the Commission's own motion regarding the regulatory filings, determinations, and/or approvals necessary for **DTE ELECTRIC COMPANY** to fully comply with the Code of Mich Admin Code, R 460.10101 *et seq.*

MPSC Case No. U-20675

Dear Ms. Felice:

Pursuant to the Michigan Public Service Commission's December 20, 2018 Order in Case No. U-18361 formally adopting administrative rules required by MCL 460.10ee(1), enclosed for filing in the above-captioned matter is DTE Electric Company's Code of Conduct Annual Report for Year Ending December 31, 2021 in compliance with R 460.10112.

Very truly yours,

Breanne K. Reitzel

BKR/klo  
Attachment

**DTE Electric Company**

**Code of Conduct**

**2021 Annual Report**

**Case No. U-20675**

**April 29, 2022**

I certify that to the best of my knowledge the information contained in this report is true and accurate and complies with MCL 460.10ee and R 460.10112.

---

---

Anthony J. Tomczak  
Vice President – DTE Electric Sales and Marketing

I certify that to the best of my knowledge the information contained in this report regarding LOAD|Watch is true and accurate and complies with MCL 460.10ee and R 460.10112.

---

Scott A. Pifer  
Director, System Operations

DTE Electric Company (DTE Electric) submits this annual Code of Conduct report for calendar year 2021 pursuant to R 460.10112. The Company reserves the right to amend or supplement this Report as necessary and reserves the right to object to any specific disclosures as they may arise in the future.

Questions regarding the contents of this Report should be directed to Kevin O’Neill, Principal Project Manager – Regulatory Affairs, One Energy Plaza, Walker Cisler Building, Detroit, MI 48226, or 313-235-7822 (M) or [kevin.oneill@dteenergy.com](mailto:kevin.oneill@dteenergy.com).

**Rule 12(1)(a)**

Utilities shall file the code of conduct annual report information required under section 10ee(6)(c) and (15), 2016 PA 341, MCL 460.10ee, no later than April 30 of each year in the docket in which the utility filed its notification for a new program or service, or in a new docket for an existing program or service. Code of conduct annual reports shall include all of the following:

(a) Designation of a corporate officer of the utility who will oversee compliance with these rules and be available to serve as the commission's primary contact regarding compliance.

**RESPONSE**

Marco A. Bruzzano, Sr. Vice President, Corporate Strategy & Regulatory Affairs, will oversee compliance with these rules. Kevin O'Neill, Regulatory Affairs Operations (313.235-7822) will be available to serve as the Commission's primary DTE Electric contact regarding compliance.

**Rule 12(1)(b)**

Utilities shall file the code of conduct annual report information required under section 10ee(6)(c) and (15), 2016 PA 341, MCL 460.10ee, no later than April 30 each year in the docket in which the utility filed its notification for a new program or service, or in a new docket for an existing program or service. Code of conduct annual reports shall include all of the following:

(b) An organizational chart of the parent or holding company showing all regulated entities and affiliates and a description of all programs and services provided between the regulated entity and its affiliates.

**RESPONSE**

Please refer to Attachments 12(1)(b)-1 that shows an organizational chart of the parent company, DTE Energy Company and all regulated entities and affiliates as of 12/31/2021.

Please refer to Attachments 12(1)(b)-2 that contains a description of all programs and services provided between DTE Electric and its affiliates as of 12/31/2021.

**Rule 12(1)(c)**

Utilities shall file the code of conduct annual report information required under section 10ee(6)(c) and (15), 2016 PA 341, MCL 460.10ee, no later than April 30 of each year in the docket in which the utility filed its notification for a new program or service, or in a new docket for an existing program or service. Code of conduct annual reports shall include all of the following:

(c) An overview of the report year, including a detailed accounting of how costs were apportioned between the utility and the value-added program or service, expectations for the following year, and any 5-year projections available for each value-added program and service.

**RESPONSE**

DTE Electric has four value-added programs – LOAD|Watch (an energy monitoring service); TreeGuard (service line assurance) and Surge Protection (protection from voltage surges) and a program, Decorative Post Lamp (lighting) that is in startup mode. See the tables below for each program.<sup>1</sup>

**Massachusetts Formula (Mass Formula)** – For reporting purposes this calculation is used to allocate indirect expenses across organizations using the organizations ST labor, Gross Margin \$'s and Plant Property and Equipment as a % of the Corporations same categories at 33% each. LoadWatch has no Plant Property or Equipment.

For budgeting purposes, DTE assumes future periods are consistent with the most recent actuals. No formal five-year projection exists for these programs.

<sup>1</sup> An income statement for Decorative Post Lamp is not presented because it was in a pilot stage throughout 2021, and other than receiving some material and working on support systems there were no sales during 2021.

**Load | Watch Income Statement  
For Year Ended  
12/31/2021**

**1 Operating Revenue**

**2 Total Operating Revenue** \$ 167,213

**3 Operating Expenses**

**4 Labor** 81,332

**5 Benefits** 42,514

**6 Corporate Allocations** 69,095

**7 Materials** -

**8 Other** 252

**9 Total Expenses** 193,193

**10 Net Operating Income/(Loss)** \$ (25,980)

**11 Federal Taxes** (5,456)

**12 State Taxes** (1,104)

**13 Income After Taxes** \$ (19,420)

**A – Includes corporate allocations from the Electric utility by using the Massachusetts formula**

**B – Federal taxes are based on a 21% tax rate**

**TreeGuard Assurance  
Financial Detail  
12/31/2021**

**Income Statement**

<b>Operating Revenue</b>	
Total Operating Revenue	<b>\$ 231,067</b>
<b>Operating Expenses</b>	
Labor	\$ 28,674
Benefits	\$ 13,407
Marketing cost	\$ 118,786
Call center	\$ 6,290
Tree trim	\$ 23,789
<b>Total Direct Expenses</b>	<b>\$ 190,945</b>
<b>Net Operating Income</b>	<b>\$ 40,122</b>
<b>Indirect Expenses</b>	
Corporation Allocations	\$ 13,319
State Tax	\$ 1,544
Federal Tax	\$ 5,304
<b>Total Indirect Expenses</b>	<b>\$ 20,167</b>
<b>Profit</b>	<b>\$ 19,954</b>

**A - Includes corporate allocations from the Electric utility using the Massachusetts formula**

**B- Federal taxes are based on a 21% tax rate**



**Surge Protection  
Financial Detail  
12/31/2021**

**Income Statement**

<b>Operating Revenue</b>	
Total Operating Revenue	\$ 50,232
<b>Operating Expenses</b>	
Labor	\$ 117,353
Benefits	\$ 50,629
Marketing cost	\$ 333,303
<b>Total Direct Expenses</b>	<b>\$ 501,285</b>
<b>Net Operating Income (loss)</b>	<b>\$ (451,053)</b>
<b>Indirect Expenses</b>	
Corporate Allocations	\$ 36,891
State Tax	\$ (26,249)
Federal Tax	\$ (96,956)
<b>Total Indirect Expenses</b>	<b>\$ (86,314)</b>
<b>Profit(Loss)</b>	<b>\$ (364,739)</b>

A - Includes corporate allocations from the Electric utility using the Massachusetts formula

B- Federal taxes are based on a 21% tax rate

**Rule 12(1)(d)**

Utilities shall file the code of conduct annual report information required under section 10ee(6)(c) and (15), 2016 PA 341, MCL 460.10ee, no later than April 30 of each year in the docket in which the utility filed its notification for a new program or service, or in a new docket for an existing program or service. Code of conduct annual reports shall include all of the following:

(d) A table illustrating the customer count, revenue, and expense of each value-added program and service.

**RESPONSE**

**LOAD|Watch**

<u>Year-end Contract Count</u>	<u>Revenue</u>	<u>Total Expenses</u>
128	\$167,213	\$173,773

**TreeGuard**

<u>Year-end Contract Count</u>	<u>Revenue</u>	<u>Total Expenses</u>
2,242	\$231,067	\$211,113

**Surge Protection**

<u>Year-end Contract Count</u>	<u>Revenue</u>	<u>Total Expenses</u>
1,008	\$50,232	\$414,971

**Rule 12(1)(e)**

Utilities shall file the code of conduct annual report information required under section 10ee(6)(c) and (15), 2016 PA 341, MCL 460.10ee, no later than April 30 of each year in the docket in which the utility filed its notification for a new program or service, or in a new docket for an existing program or service. Code of conduct annual reports shall include all of the following:

(e) A balance sheet, where available, and income statement for each value-added program and service offered by an affiliate or other entity within the corporate structure, including revenues, less direct and indirect expenses broken out separately. Direct and indirect revenues and expenses shall be separated by category and then aggregated at the direct and indirect levels, and the report shall include gross income, amounts flowed back to ratepayers to reduce rates, and net income. Each category of indirect cost should be accompanied by formulas / calculations / allocations showing how they have been derived.

**RESPONSE**

No balance sheet is available for either LOAD|Watch, Surge Protection, or TreeGuard.

See the Company's response to Rule 12(1)(c) above for an income statement of the three DTE Electric VAPS programs that are not in a pilot stage, which includes direct and indirect revenues and expenses.

LOAD|Watch, TreeGuard, and Surge Protection revenue and expenses are not included in the determination of DTE Electric's rates. These program's revenue and expenses are flowed through Other Income and Deductions.

**Rule 12(1)(f)**

Utilities shall file the code of conduct annual report information required under section 10ee(6)(c) and (15), 2016 PA 341, MCL 460.10ee, no later than April 30 of each year in the docket in which the utility filed its notification for a new program or service, or in a new docket for an existing program or service. Code of Conduct annual reports shall include all of the following:

(f) General ledger and trial balance for each value-added program and service shall be provided to the commission staff separately on a USB thumb drive or other appropriate technological device with formulas intact.

**RESPONSE**

| No general ledger or trial balance is maintained for the LOAD|Watch, TreeGuard, or Surge Protection VAPS.

**Rule 12(1)(g)**

Utilities shall file the code of conduct annual report information required under section 10ee(6)(c) and (15), 2016 PA 341, MCL 460.10ee, no later than April 30 of each year in the docket in which the utility filed its notification for a new program or service, or in a new docket for an existing program or service. Code of conduct annual reports shall include all of the following:

(g) The number and type of complaints received in the prior calendar year regarding code of conduct issues from customers, alternative electric suppliers, or any other person or entity, and a summary of the resolution of any complaint that occurred during the calendar year.

**RESPONSE**

No complaints regarding code of conduct issues were received by DTE Electric in 2021.

**Rule 12(1)(h)**

Utilities shall file the code of conduct annual report information required under section 10ee(6)(c) and (15), 2016 PA 341, MCL 460.10ee, no later than April 30 of each year in the docket in which the utility filed its notification for a new program or service, or in a new docket for an existing program or service. Code of conduct annual reports shall include all of the following:

(h) The number of times during the prior calendar year that customer information was provided to an affiliate or competing provider of an unregulated value-added program or service, the identity of the affiliate or competing provider, and a description of the information shared.

**RESPONSE**

During calendar year 2021, there were no known instances where customer information was provided to an affiliate or competing provider of an unregulated value-added program or service.

**Rule 12(1)(i)**

Utilities shall file the code of conduct annual report information required under section 10ee(6)(c) and (15), 2016 PA 341, MCL 460.10ee, no later than April 30 of each year in the docket in which the utility filed its notification for a new program or service, or in a new docket for an existing program or service. Code of conduct annual reports shall include all of the following:

(i) A description of the nature of each transaction with an affiliate or other entity within the corporate structure and of the basis for the cost allocation and pricing established in each transaction.

**RESPONSE**

DTE Electric routinely reports such transactions between its affiliates and/or subsidiaries. See Attachment 12(1)(i)-1, Pages 226B and 226.1B, "Receivables from Associated Companies," Attachment 12(1)(i)-2, Pages 260B and 260.1B, "Payables to Associated Companies," Attachment 12(1)(i)-3, Pages 358 through 359.1, "Summary of Costs Billed to Associated Companies," and Attachment 12(1)(i)-4, Pages 360 through 361.1, "Summary of Costs Billed From Associated Companies."

All of these attachments were taken from the MPSC Annual Report Form P-521 for the year 2021.

The description of the basis upon which cost allocations and transfer pricing have been established in these transactions and are contained in the "Subsidiary Company Master Service Agreement" and "Service Level Agreement – Shared Services," shown in Attachment 12(1)(i)-5.

**Rule 12(1)(j)**

Utilities shall file the code of conduct annual report information required under section 10ee(6)(c) and (15), 2016 PA 341, MCL 460.10ee, no later than April 30 of each year in the docket in which the utility filed its notification for a new program or service, or in a new docket for an existing program or service. Code of conduct annual reports shall include all of the following:

(j) Reports of internal audits conducted by the utility regarding transactions between the utility and its affiliates, or transactions between the utility and other entities within the corporate structure offering value-added programs or services.

**RESPONSE**

There were no internal audits regarding transactions between the utility and its affiliates, or transactions between the utility and other entities within the corporate structure offering value-added programs or services conducted during 2021.



**Rule 12(2)**

The annual report shall be signed by the designated corporate officer or a person responsible for each value-added program and service attesting to the accuracy of the information in the annual report and certifying that there is no cross-subsidization between regulated and non-regulated utility programs and services.

**RESPONSE**

The annual report has been signed.

**Rule 12(3)**

(3) Copies of federal income tax returns for utilities, affiliates, and, where applicable, other entities within the corporate structure who offer a value-added program or service, shall be available to the commission for inspection and review.

**RESPONSE**

Copies of federal income tax returns shall be made available to the Commission upon request.

**DTE Electric Company**

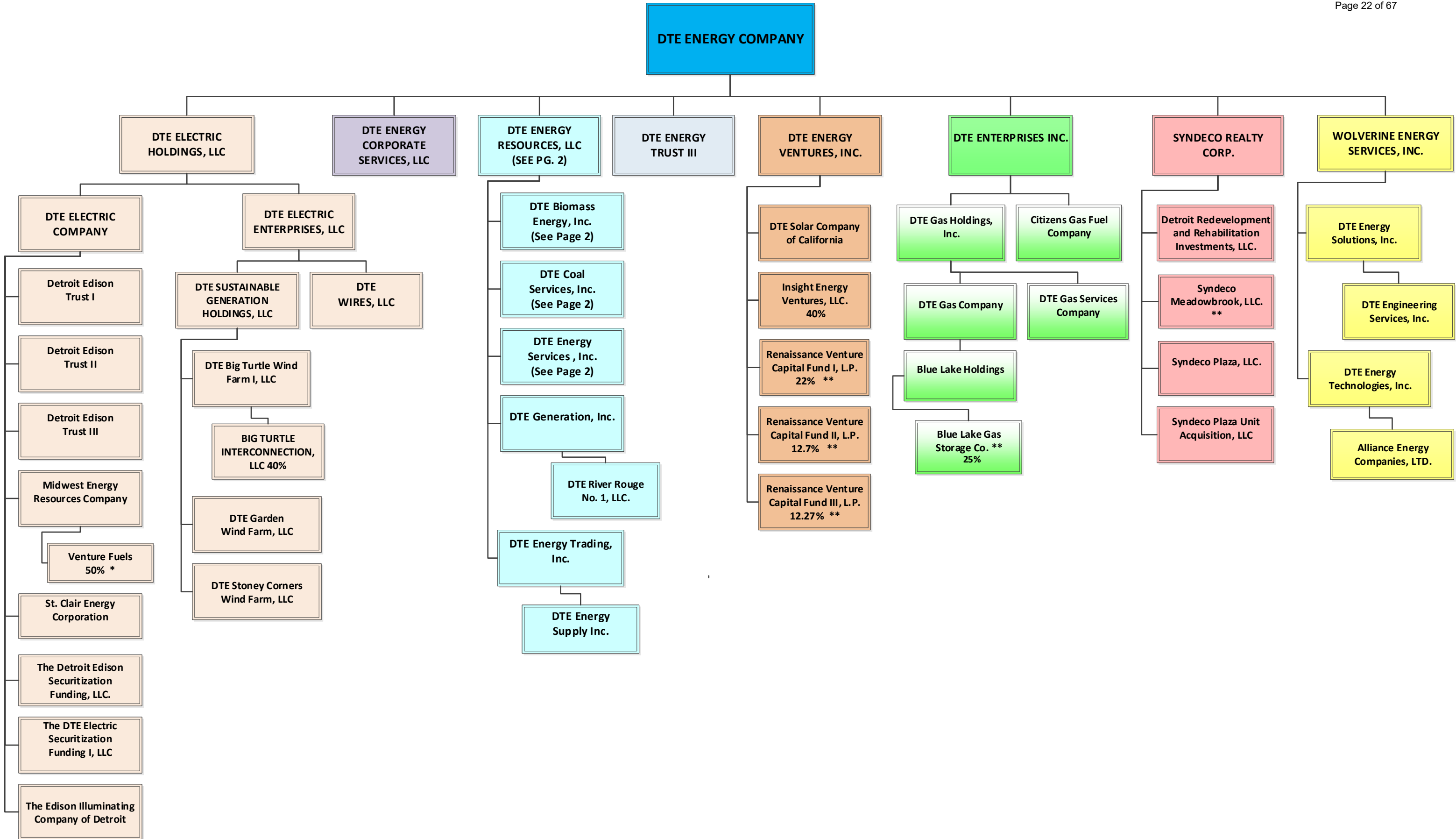
**Code of Conduct**

**2021 Annual Report**

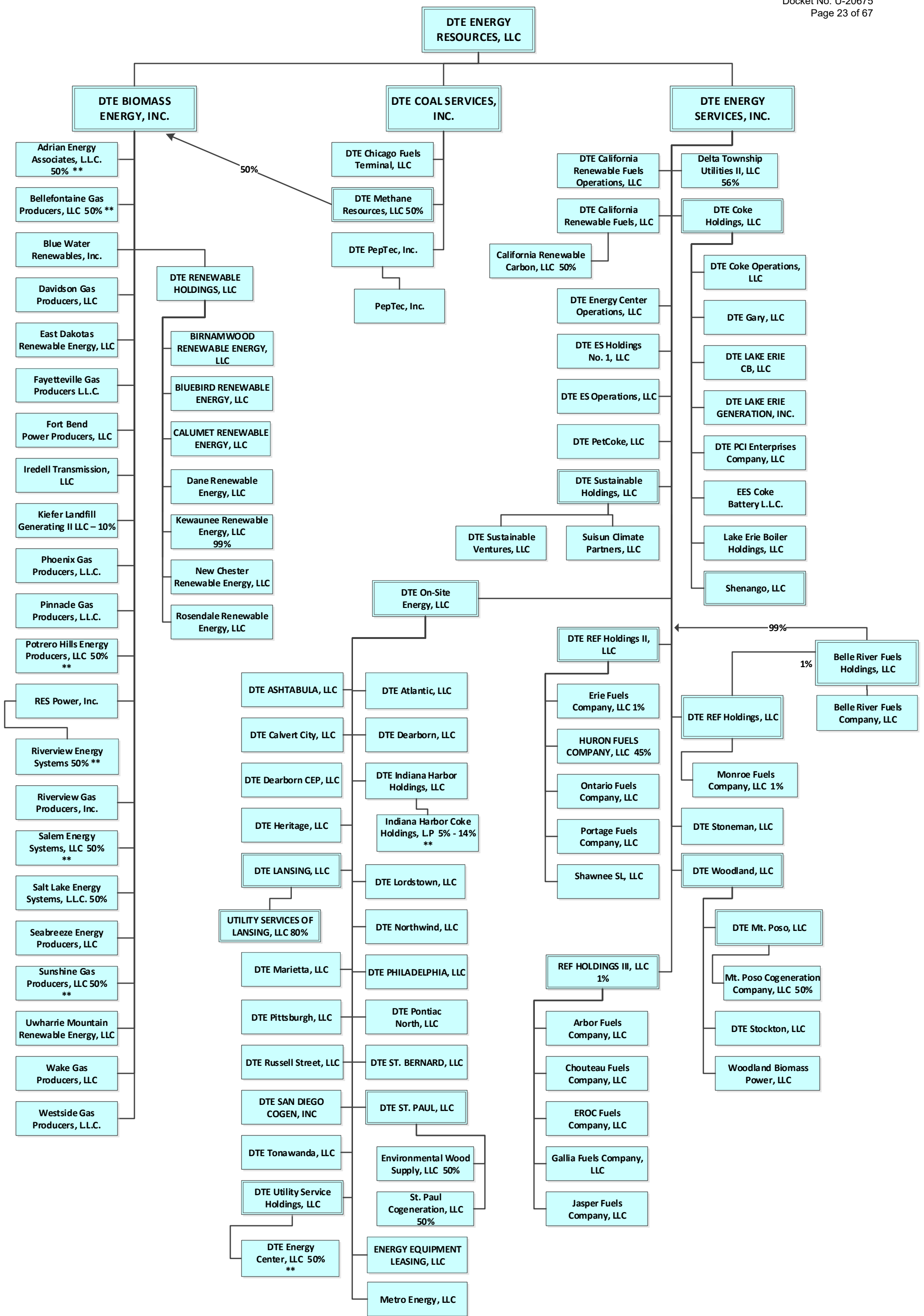
**Attachments**

## **Attachments**

**Attachment 12(1)(b)-1**



\* Joint Venture    \*\*Partnership



\* Joint Venture    \*\*Partnership

**Attachment 12(1)(b)-2**



## I. NATURE OF BUSINESS OF CLAIMANTS AND EVERY SUBSIDIARY THEREOF

Claimant: DTE Energy Company

DTE Energy Company (Company or DTE) is a Michigan corporation. DTE owns, directly and indirectly, three utilities; DTE Electric Company (DTE Electric), DTE Gas Company (DTE Gas), and Citizens Gas Fuel Company (Citizens), and non-regulated subsidiaries engaged in energy marketing and trading, energy services, and various other electricity, coal, and gas related businesses. The Company's address is 1 Energy Plaza, Detroit, Michigan 48226-1279.

Claimant: DTE Enterprises, Inc.

DTE Enterprises, Inc. (DTEE) owns, directly and indirectly, two utilities, DTE Gas and Citizens, and non-regulated subsidiaries primarily involved in natural gas production, gathering, processing, transmission, storage, distribution, and marketing in the Midwest-to-Northeast corridor. DTEE is organized under the laws of the state of Michigan and has its principal executive offices at 1 Energy Plaza, Detroit, Michigan 48226-1279.

Claimant: DTE Gas Holdings, Inc.

DTE Gas Holdings, Inc., (Gas Holdings) is the holding company for DTE Gas Company and DTE Gas Services Company (Gas Services). Gas Holdings is organized under the laws of the state of Michigan and has its principal executive offices located at 1 Energy Plaza, Detroit, Michigan 48226-1279.

### 1. DTE Energy Company

- A. DTE Energy Corporate Services, LLC (Corporate Services) is a Michigan limited liability company. Corporate Services is a wholly owned subsidiary of DTE Energy Company with offices at 1 Energy Plaza, Detroit, Michigan 48226-1279. Corporate Services provides functional support to the DTE Energy enterprise.
- B. DTE Energy Resources, LLC (DTE ER) is a Delaware limited liability company. DTE ER is a wholly owned subsidiary of the Company with offices at 1 Energy Plaza, 400 WCB Detroit, Michigan 48226. DTE ER is engaged in energy services, electric generation, electric and gas marketing and trading and landfill gas projects. DTE ER is also conducting business under the assumed name of DTE Power and Industrial Group.  
**NEW ASSUMED NAME "DTE VANTAGE" 11/18/2021**
  - 1) DTE Biomass Energy, Inc., (DTE Biomass) is a Michigan corporation with offices at 1 Energy Plaza, 400 WCB Detroit, Michigan 48226. DTE Biomass is a wholly owned subsidiary of DTE ER and is engaged in landfill and renewable natural gas projects
    - a) Adrian Energy Associates, LLC (Adrian Energy) is a Michigan limited liability company with offices at 29261 Wall Street, Wixom, Michigan 48393. Adrian Energy is a 50% owned subsidiary of DTE Biomass and is engaged in the production of electricity from landfill gas.
    - b) Bellefontaine Gas Producers, L.L.C. (Bellefontaine Gas) is a Delaware limited liability company with offices at 1 Energy Plaza, 400 WCB Detroit, Michigan 48226. Bellefontaine Gas is a 50% owned subsidiary of DTE Biomass and is an inactive company.
    - c) Blue Water Renewables, Inc. (Blue Water) is a Michigan corporation with offices located at 1 Energy Plaza, 400 WCB Detroit, Michigan 48226. It is a wholly owned subsidiary of DTE Biomass and is engaged in landfill gas projects.
    - d) Davidson Gas Producers, LLC (Davidson) is a Michigan limited liability company with offices at 1 Energy Plaza, 400 WCB Detroit, Michigan 48226. Davidson is a wholly owned subsidiary of DTE Biomass and is engaged in landfill gas projects.
    - e) Denton Power, LLC (Denton) is a Michigan limited liability company with offices 1 Energy Plaza, 400 WCB Detroit, Michigan 48226. Denton is a wholly owned subsidiary of DTE Biomass and is engaged in landfill gas projects. **DISSOLVED 10/21/2021**
    - f) DTE Methane Resources, L.L.C. (DTE Methane) is a Michigan limited liability company with offices at 1 Energy Plaza, 400 WCB Detroit, Michigan 48226. DTE Methane is an owned 50% by DTE Biomass and 50% by DTE Coal Services and is an inactive company.
    - g) DTE RENEWABLE HOLDINGS, LLC (DTERH) is a Delaware limited liability company with offices at 1 Energy Plaza, 400 WCB Detroit, Michigan 48226. DTERH is wholly owned subsidiary of DTE Biomass Energy, Inc. and is a holding company for renewable natural gas projects.

1. BIRNAMWOOD RENEWABLE ENERGY, LLC (BIRNAMWOOD) is a Delaware limited liability company with offices at 1 Energy Plaza, 400 WCB Detroit, Michigan 48226. Bluebird is a wholly owned subsidiary of DTERH and is engaged in renewable natural gas project.  
**NEW FORMATION 8/27/2021**
  2. BLUEBIRD RENEWABLE ENERGY, LLC (BLUEBIRD)) is a Delaware limited liability company with offices at 1 Energy Plaza, 400 WCB Detroit, Michigan 48226. Bluebird is a wholly owned subsidiary of DTERH and is engaged in renewable natural gas project.  
**NEW FORMATION 8/27/2021**
  3. CALUMET RENEWABLE ENERGY, LLC (CALUMET) is a Delaware limited liability company with offices at 1 Energy Plaza, 400 WCB Detroit, Michigan 48226. CALUMET is a wholly owned subsidiary of DTERH and is engaged in renewable natural gas project.
  4. DANE RENEWABLE ENERGY, LLC (Dane) is a Delaware limited liability company with offices at 1 Energy Plaza, 400 WCB Detroit, Michigan 48226. Dane is a wholly owned subsidiary owned by DTERH and holds ownership of a renewable natural gas project.
  5. KEWAUNEE RENEWABLE, LLC is a Delaware limited liability company with offices at 1 Energy Plaza, 400 WCB Detroit, Michigan 48226. Kewaunee is owned 99% by DTERHC and maintains and operates a renewable natural gas project in Wisconsin
  6. NEW CHESTER RENEWABLE ENERGY, LLC (Chester) is a Delaware limited liability company with offices at 1 Energy Plaza, 400 WCB Detroit, Michigan 48226. Chester is a wholly owned subsidiary of DTERH and maintains and operates renewable natural gas project in Wisconsin
  7. Rosendale Renewable Energy, LLC (Rosendale) is a Delaware limited liability company with offices at 1 Energy Plaza, 400 WCB Detroit, Michigan 48226. Rosendale is a wholly owned subsidiary of DTERHC and owns and operates a renewable natural gas facility.
- h) EAST DAKOTAS RENEWABLE ENERGY, LLC (EDRE) is a Delaware limited liability company with offices at 1 Energy Plaza, Detroit, Michigan 48226. EDRE is a wholly owned subsidiary owned by DTERH and owns a dairy gas to RNG facility in south Dakota
  - i) Fayetteville Gas Producers, L.L.C. (Fayetteville) is a North Carolina limited liability company with offices located at 1 Energy Plaza, 400 WCB Detroit, Michigan 48226. Fayetteville is a wholly owned subsidiary of DTE Biomass and is engaged in landfill gas projects.
  - j) Fort Bend Power Producer, LLC (Fort Bend) is a Delaware limited liability company with offices located at 1 Energy Plaza, 400 WCB Detroit, Michigan 48226. Fort Bend is wholly owned by DTE Biomass and is engaged in a landfill gas to energy project.
  - k) Iredell Transmission, LLC (Iredell Trans) is a North Carolina limited liability company with offices at 1 Energy Plaza, 400 WCB Detroit, Michigan 48226. Iredell is wholly owned by DTE Biomass and is engaged in landfill gas projects.
  - l) Kiefer Landfill Generating II, LLC (Kiefer) is a Michigan limited liability company with offices at 1 Energy Plaza, 400 WCB Detroit, Michigan 48226. Kiefer is a 10% owned subsidiary of DTE Biomass and is engaged in landfill gas projects.
  - m) Phoenix Gas Producers, L.L.C. (Phoenix) is a Michigan limited liability company with offices 1 Energy Plaza, 400 WCB Detroit, Michigan 48226. Phoenix is a wholly owned subsidiary of DTE Biomass and is engaged in landfill gas projects.
  - n) Pinnacle Gas Producers, L.L.C. (Pinnacle) is a Michigan limited liability company with offices at 1 Energy Plaza, 400 WCB Detroit, Michigan 48226. Pinnacle is a wholly owned subsidiary of DTE Biomass and is engaged in a landfill gas-to-energy project.
  - o) Potrero Hills Energy Producers, LLC (Potrero) is a Michigan limited liability company with offices at 1 Energy Plaza, 400 WCB Detroit, Michigan 48226. Potrero is a 50% owned subsidiary of DTE Biomass and is engaged in landfill gas projects.
  - p) RES Power, Inc. (RESP) is a Michigan corporation with offices at 1 Energy Plaza, 400 WCB Detroit, Michigan 48226. RESP is a wholly owned subsidiary of DTE Biomass and is engaged in landfill gas projects. It owns 50% of Riverview Energy Systems.

1. Riverview Energy Systems (Riverview) is a Michigan partnership with offices at 29261 Wall Street, Wixom, Michigan 48393. Riverview is a 50% owned subsidiary of RESP and is engaged in the production of electricity from landfill gas.
- q) Riverview Gas Producers, Inc. (RPG) is a Michigan corporation with offices 1 Energy Plaza, 400 WCB Detroit, Michigan 48226. RPG is a wholly owned subsidiary of DTE Biomass and is engaged in landfill gas projects.
- r) Salem Energy Systems, LLC (Salem) is a North Carolina limited liability company with offices at 29261 Wall Street, Wixom, Michigan 48393. Salem is 50% owned by DTE Biomass and is engaged in the production of electricity from landfill gas.
- s) Salt Lake Energy Systems, L.L.C. (Salt Lake) is a Michigan limited liability company with offices at 1 Energy Plaza, 400 WCB Detroit, Michigan 48226. Salt Lake is a 50% owned subsidiary of DTE Biomass and is engaged in a landfill gas-to-energy project.
- t) Seabreeze Energy Producers, LLC (SEP) is a Texas limited liability company with offices at 1 Energy Plaza, 400 WCB Detroit, Michigan 48226. SEP is wholly owned subsidiary of DTE Biomass and is engaged in a landfill gas to energy project.
- u) Sunshine Gas Producers, LLC (Sunshine) is a Michigan limited liability company with offices 1 Energy Plaza, 400 WCB Detroit, Michigan 48226. Sunshine Gas is a 50% owned subsidiary of DTE Biomass and is engaged in landfill gas projects.
- v) Uwharrie Mountain Renewable Energy, LLC (Uwharrie) is a Delaware limited liability company with offices at 1 Energy Plaza, 400 WCB Detroit, Michigan 48226. Uwharrie is a wholly owned subsidiary of DTE Biomass and is a landfill gas facility.
- w) Wake Gas Producers, L.L.C. (Wake) is a North Carolina limited liability company with offices at 1 Energy Plaza, 400 WCB Detroit, MI 48226. Wake is a wholly owned subsidiary of DTE Biomass and is engaged in landfill gas projects.
- x) Westside Gas Producers, L.L.C. (Westside) is a Michigan limited liability company with offices at 1 Energy Plaza, 400 WCB Detroit, Michigan 48226. Westside is a wholly owned subsidiary of DTE Biomass and is engaged in landfill gas projects.
- 2) DTE Coal Services, Inc., (DTE Coal) is a Michigan corporation with offices at 1 Energy Plaza, 400 WCB Detroit, Michigan 48226. DTE Coal is a wholly owned subsidiary of DTE ER and is an inactive company.
  - a) DTE Chicago Fuels Terminal, LLC (Chicago Fuels) is a Michigan limited liability company with offices at 1 Energy Plaza, 400 WCB Detroit, Michigan 48226. This company is a wholly owned subsidiary of DTE Coal and is an inactive company.
  - b) DTE Peptec, Inc., (DTE Peptec) is a Michigan corporation with offices at 1 Energy Plaza, 400 WCB Detroit, Michigan 48226. DTE Peptec is a wholly owned subsidiary of DTE Coal and is an inactive company.
    1. Peptec, Inc. (Peptec) is a Pennsylvania corporation with offices 1 Energy Plaza, 400 WCB Detroit, Michigan 48226. Peptec is a wholly owned subsidiary of DTE Peptec and is an inactive company.
- 3) DTE Energy Services, Inc. (DTE ES) is a Michigan corporation with offices at 1 Energy Plaza, 400 WCB Detroit, MI 48226. DTE ES is a wholly owned subsidiary of DTE ER and is engaged in energy services activities.
  - a) Delta Township Utilities II, LLC (Utilities II) is a Delaware limited liability company with offices at 1 Energy Plaza, 400 WCB Detroit, Michigan 48226. Utilities II is owned 56% by DTE ES. It provides utility services to an automobile manufacturing facility in Lansing, Michigan.
  - b) DTE Backup Generation Equipment Leasing, L.L.C. (Backup Generation Equipment Leasing) is a Delaware limited liability company with offices 1 Energy Plaza, 400 WCB Detroit, Michigan 48226. Backup Generation Equipment Leasing is a wholly owned subsidiary of DTE ES and is engaged in the equipment leasing business. **DISSOLVED 02/03/2021**

- c) DTE CALIFORNIA RENEWABLE FUELS, LLC is a Delaware limited liability company with offices at 1 Energy Plaza, 400 WCB Detroit, Michigan 48226. DTE California Renewable Fuels, LLC is a wholly owned subsidiary of DTE ES and owns two California facilities that will manufacture Energy Carbon, a Biomass derived, energy dense pellet
  - 1. CALIFORNIA RENEWABLE CARBON, LLC is a Delaware limited liability company with offices at 1 Energy Plaza, 400 WCB Detroit, Michigan 48226. California Renewable Carbon, LLC is owned 50% by DTE California Renewable Fuels, LLC **DISSOLVED 10/29/2020**
- d) DTE CALIFORNIA RENEWABLE FUELS OPERATIONS, LLC is a Delaware limited liability company with offices at 1 Energy Plaza, 400 WCB Detroit, Michigan 48226. DTE California Renewable Fuels, LLC is a wholly owned subsidiary of DTE ES and owns two California facilities that will manufacture Energy Carbon, a Biomass derived, energy dense pellet
- e) DTE CARBON HOLDINGS, LLC is a Delaware limited liability company with offices at 1 Energy Plaza, 400 WCB Detroit, Michigan 48226. DTE Carbon holdings, LLC is a wholly owned subsidiary of DTE ES and is a Holding company for project entities for the development of underground storage of CO2 in the Sacramento Delta region. **NAME CHANGE TO DTE SUSTAINABLE HOLDINGS, LLC 10/14/2021**
  - 1. DTE SUSTAINABLE VENTURES, LLC is a Delaware limited liability company with offices at 1 Energy Plaza, 400 WCB Detroit, Michigan 48226. DTE Sustainable Ventures, LLC is a wholly owned subsidiary of DTE Sustainable Holdings, LLC and is involved in Carbon Capture & Sequestration activities. **NEW FORMATION 10/11/2021**
  - 2. SUISUN CLIMATE PARTNERS, LLC (Suisun) is a Delaware limited liability company with offices 1 Energy Plaza, 400 WCB Detroit, Michigan 48226. Suisun is a wholly owned subsidiary of DTE Sustainable Holdings, LLC and develops underground storage for CO2 in the Sacramento Delta region.
- f) DTE Coke Holdings, LLC (Coke Holdings) is a Delaware limited liability company with offices at 1 Energy Plaza, 400 WCB Detroit, Michigan 48226. Coke Holdings is a wholly owned subsidiary of DTE ES and is a holding company.
  - 1. DTE Coke Operations, LLC (DTE Coke) is a Michigan limited liability company with offices at 1 Energy Plaza, 400 WCB Detroit, Michigan 48226. DTE Coke is a wholly owned subsidiary of DTE Coke Holdings, LLC and is involved in in the operation and maintenance of coke battery facilities.
  - 2. DTE Gary LLC (Gary) is a Delaware limited liability company with offices 1 Energy Plaza, 400 WCB Detroit, Michigan 48226. Gary is a wholly owned subsidiary of DTE Coke Holdings, LLC and is an inactive company.
  - 3. DTE Lake Erie CB, LLC a limited liability company with offices at 1 Energy Plaza, 400 WCB Detroit, Michigan 48226. It is a wholly owned subsidiary of DTE Coke Holdings, LLC and serves as Agent for Loan Agreement. **NEW FORMATION: 3/29/2021**
  - 4. DTE LAKE ERIE GENERATION, INC. is a British Columbia Corporation with offices at 510 West George Street, Suite 1800, Vancouver, BC V6B 0M3. DTE Lake Erie Generation, Inc is wholly owned by DTE Coke Holdings, LLC and is a project entity for a potential onsite energy project.
  - 5. DTE LAKE ERIE HOLDINGS, LLC is a Delaware limited liability company with offices at 1 Energy Plaza, 400 WCB Detroit, Michigan 48226. DTE Lake Erie Holdings is a wholly owned subsidiary of Coke Holdings and is a holding company. **DISSOLVED 03/11/2021**
    - a. LAKE ERIE COKE BATTERY HOLDINGS, LLC (LECBH) is a Delaware Limited Liability company with offices at 1 Energy Plaza, 400 WCB Detroit, Michigan 48226. LECBA is a wholly owned subsidiary of DTE Lake Erie Holdings, LLC and is an inactive company **DISSOLVED 3/11/2021**
    - b. LAKE ERIE BOILER, L.P. (LEB) is a Delaware limited partnership with offices at 1 Energy Plaza, 400 WCB Detroit, Michigan 48226. LEB is a wholly owned subsidiary of DTE Lake Erie Holdings, LLC and is an inactive company. **DISSOLVED 3/11/2021**
  - 6. DTE PCI Enterprises Company, LLC (DTE PCI) is a Delaware limited liability company with offices at 1 Energy Plaza, 400 WCB Detroit, Michigan 48226. DTE PCI is a wholly owned subsidiary of DTE Coke Holdings, LLC and operates a pulverized coal facility.

7. EES Coke Battery, L.L.C. (EES) is a Michigan limited liability company with offices 1 Energy Plaza, 400 WCB Detroit, Michigan 48226. EES is wholly owned by DTE Coke Holdings, LLC and is engaged in coke supply and coke battery operations.
  8. LAKE ERIE BOILER HOLDINGS, LLC is a Delaware limited liability company with offices at 1 Energy Plaza, 400 WCB Detroit, Michigan 48226. DTE Lake Erie Holdings is a wholly owned subsidiary of Coke Holdings and is a project entity for the potential financing of an onsite energy project.
  9. LAKE ERIE COKE BATTERY, LP (LECP) is a Delaware limited partnership with offices at 1 Energy Plaza, 400 WCB Detroit, Michigan 48226. DTE Lake Erie Holdings, LLC is a wholly owned subsidiary of Coke Holdings and is an inactive company. **DISSOLVED 03/11/2021**
  10. Shenango LLC (Shenango) is a Pennsylvania corporation with offices 1 Energy Plaza, 400 WCB Detroit, MI 48226. Shenango is a wholly owned subsidiary of Coke Holdings and is an inactive company.
- g) DTE Energy Center Operations, LLC (DTE Energy Cent Oper) is a Delaware limited liability company with offices at 1 Energy Plaza, 400 WCB Detroit, Michigan 48226. DTE Energy Cent Oper is a wholly owned subsidiary of DTE ES and is involved in the operation of Energy Center.
  - h) DTE ES Holdings No. 1, LLC (ES Holdings) is a Delaware limited liability company with offices at 1 Energy Plaza, 400 WCB Detroit, Michigan 48226. ES Holdings is a wholly owned subsidiary of DTE ES and is a holding company.
  - i) DTE ES Operations, LLC (ES Oper) is a Delaware limited liability company with offices 1 Energy Plaza, 400 WCB Detroit, Michigan 48226. ES Oper is a wholly owned subsidiary of DTE ES and is engaged in the operation and maintenance of electric generation facilities.
  - j) DTE Mobile Operations, LLC (DTE Mobile) is a Delaware limited liability company with offices at 1 Energy Plaza, 400 WCB Detroit, Michigan 48226. DTE Mobile is a wholly owned subsidiary of DTE ES and is an inactive company. **DISSOLVED 02/03/2021**
  - k) DTE On-Site Energy, LLC (On-Site) is a Delaware limited liability company with offices at 1 Energy Plaza, 400 WCB Detroit, Michigan 48226. DTE On-Site is a wholly owned subsidiary of DTE ES and is involved in on-site energy projects.
    1. DTE Ashtabula, LLC (Ashtabula) is a Delaware limited liability company with offices at 1 Energy Plaza, 400 WCB Detroit, Michigan 48226. Ashtabula is wholly owned by On-Site. It operates five Co-Generation units that provide steam, electricity, boiler feed water and compressed air to a facility in Ashtabula Ohio.
    2. DTE Atlantic, LLC is a Delaware limited liability company with offices at 1 Energy Plaza, 400 WCB Detroit, Michigan 48226. DTE Atlantic, LLC is a wholly owned subsidiary of DTE On-site Energy, LLC and operates and maintains a cogeneration project in Atlantic City, New Jersey.
    3. DTE Calvert City, LLC (DTE Calvert) is a Delaware limited liability company with offices at 1 Energy Plaza, 400 WCB Detroit, Michigan 48226. Calvert is a wholly owned subsidiary of On-Site and provides energy related services.
    4. DTE Dearborn, LLC (Dearborn) is a Delaware limited liability company with offices at 1 Energy Plaza, 400 WCB Detroit, MI 48226. Dearborn is a wholly owned subsidiary of On-Site and is engaged in the operation of a compressed air facility.
    5. DTE Dearborn CEP, LLC, (CEP) is a Delaware limited liability company with offices at 1 Energy Plaza, 400 WCB Detroit, Michigan 48226. CEP is a wholly owned subsidiary of On-Site and is involved in construction, operation, and ownership of an energy infrastructure at the Ford Research and Engineering Campus in Dearborn, Michigan.
    6. DTE Heritage, LLC (DTE Heritage) is a Michigan limited liability company with offices at 1 Energy Plaza, 400 WCB Detroit, Michigan 48226. DTE Heritage is a wholly owned subsidiary of On-Site and is engaged in the ownership and operation of an internal electric distribution system of electricity.

7. DTE Indiana Harbor Holdings, LLC (DTE Indiana Harbor) is a Delaware limited liability company with offices at 1 Energy Plaza, 400 WCB Detroit, Michigan 48226. DTE Indiana Harbor is a wholly owned subsidiary of On-Site. DTE Indiana Harbor owns 14.8% of Indiana Harbor Coke Company L.P.
  - a. Indiana Harbor Coke Company L.P., (Indiana Harbor Coke Company) is a Delaware limited partnership with offices at 1 Energy Plaza, 400 WCB Detroit, Michigan 48226. Indiana Harbor Coke Company is 14.8% owned by DTE Indiana Harbor and operates a coke battery facility.
8. DTE Lansing, LLC (Lansing) is a Delaware limited liability company with offices at 1 Energy Plaza, 400 WCB Detroit, Michigan 48226. It is wholly owned by On-Site and it operates and maintains a Central Utilities Complex (CUC) providing utility services to 3 buildings at the Grand River Assembly Facility. Lansing owns 80% of Utility Services of Lansing, LLC.
  - a. Utility Services of Lansing, LLC (Utility Services) is a Delaware limited liability company with offices at 1 Energy Plaza, 400 WCB Detroit, Michigan 48226. Utility Services is owned 80% by Lansing and provides utility services to a facility in Lansing, Michigan.
9. DTE Lordstown, LLC (Lordstown) is an Ohio limited liability company with offices at 1 Energy Plaza, 400 WCB Detroit, Michigan 48226. DTE Lordstown is a wholly owned subsidiary of On-Site and is an inactive company.
10. DTE Marietta, LLC (Marietta) is a Delaware limited liability company with offices at 1 Energy Plaza, 400 WCB Detroit, Michigan 48226. It is a wholly owned subsidiary of On-Site and holds project contracts to provide energy related services.
11. DTE Northwind, LLC, (Northwind) is a Delaware limited liability company with offices at 1 Energy Plaza, 400 WCB Detroit, Michigan 48226. Northwind is a wholly owned subsidiary of On-Site and operates a chilled water plant.
12. DTE Philadelphia, LLC (Philadelphia) is a Delaware limited liability company with offices at 1 Energy Plaza, 400 WCB Detroit, Michigan 48226. Philadelphia is a wholly owned subsidiary of On-Site. It operates and maintains the electric distribution, heat, and non-potable water systems for the Philadelphia Authority for Industrial Development.
13. DTE Pittsburgh, LLC (Pittsburgh) is a Delaware limited liability company with offices at 1 Energy Plaza, 400 WCB Detroit, Michigan 48226. Pittsburgh is a wholly owned subsidiary of On-Site and provides energy related services.
14. DTE Pontiac North, LLC (Pontiac) is a Michigan limited liability company with offices at 1 Energy Plaza, 400 WCB Detroit, Michigan 48226. Pontiac is a wholly owned subsidiary of On-Site and is an inactive company.
15. DTE RUSSELL STREET, LLC is a Delaware limited liability company with offices at 1 Energy Plaza, 400 WCB Detroit, Michigan 48226. It is a wholly owned subsidiary of On-Site and provides certain utilities back up electricity and related services in Detroit, Michigan
16. DTE SAN DIEGO COGEN, INC. (San Diego Cogen) is a Delaware corporation with offices 1 Energy Plaza, 400 WCB Detroit, MI 48226. San Diego Cogen is a wholly owned subsidiary of On-Site and operates and maintains a cogeneration facility in San Diego California.
17. DTE St. Bernard, LLC (St. Bernard) is a Delaware limited liability company with offices at 1 Energy Plaza, 400 WCB Detroit, Michigan 48226. St. Bernard is a wholly owned subsidiary of On-Site. It provides steam, electricity, high density liquid processing, water, sewer, fuel, and coal services to a facility in Cincinnati.
18. DTE St. Paul, LLC (St. Paul) is a Delaware limited liability company with offices at 1 Energy Plaza, 400 WCB Detroit, Michigan 48226. St. Paul is a wholly owned subsidiary of On-Site. It is part of a joint venture providing electricity from wood waste to biomass to Northern States Power Company. It owns 50% of St. Paul Cogeneration, LLC and 50% of Environmental Wood Supply, LLC.
  - a. St. Paul Cogeneration, LLC (St. Paul Cogen) is a Minnesota limited liability company with offices at 1 Energy Plaza, 400 WCB Detroit, Michigan 48226. It is 50% owned by St. Paul. It provides electricity and heat through a wood-fired combined heat and power plant to a state government complex.

- b. Environmental Wood Supply, LLC (Environmental Wood) is a Minnesota limited liability company with offices at 1 Energy Plaza, 400 WCB Detroit, Michigan 48226. It is 50% owned by St. Paul. It provides electricity and heat through a wood-fired combined heat and power plant to Northern States Power Company.
- 19. DTE Tonawanda, LLC (Tonawanda) is a Michigan limited liability company with offices at 1 Energy Plaza, 400 WCB Detroit, MI 48226. Tonawanda is a wholly owned subsidiary of On-Site and is engaged in wastewater treatment and supply of chilled water.
  - 20. DTE Utility Service Holdings, LLC (Utility Serv) is a Delaware limited liability company with offices at 1 Energy Plaza, 400 WCB Detroit, Michigan 48226. Utility Serv is a wholly owned subsidiary of On-Site and is a holding company. Utility Services owns 50% of DTE Energy Center, LLC.
    - a. DTE Energy Center, LLC (Energy Center) is a Delaware limited liability company with offices at 1 Energy Plaza, 400 WCB Detroit, Michigan 48226. Energy Center is 50% owned by Utility Serv and is involved in providing utility and energy conservation services.
  - 21. Energy Equipment Leasing, LLC (Energy Equipment) is a Delaware limited liability company with offices at 1 Energy Plaza, 400 WCB Detroit, Michigan 48226. Energy Equipment Leasing is a wholly owned subsidiary of On-Site and leases boiler and turning equipment to a facility near Baltimore, Maryland, and cogeneration equipment to a facility in Ashtabula, Ohio.
  - 22. Metro Energy, LLC (Metro) is a Michigan limited liability company with offices at 1 Energy Plaza, 400 WCB Detroit, Michigan 48226. Metro Energy, LLC is a wholly owned subsidiary of On-Site and provides energy related service.
- l) DTE PetCoke, LLC (Pet Coke) is a Delaware limited liability company with offices at 1 Energy Plaza, 400 WCB Detroit, Michigan 48226. Pet Coke is wholly owned subsidiary of DTE ES and is engaged in the supply of petroleum coke.
  - m) DTE Pulp & Paper Holdings, LLC (DTE Pulp) is a limited liability Delaware company with offices at 1 Energy Plaza, 400 WCB Detroit, Michigan 48226. DTE Pulp is a wholly owned subsidiary of DTE ES and is a holding company. DTE Pulp owns 50% of MESC Capital, LLC.  
**DISSOLVED 2/12/2021**
    - 1. MESC Capital, LLC (MESC Cap) is a Delaware limited liability company with offices at 1 Energy Plaza, 400 WCB Detroit, Michigan 48226. MESC Cap is 50% owned by DTE Pulp and is involved in financing and investing activities. MESC Cap owns Mobile Energy Services Company, LLC. **DISSOLVED 02/03/2021**
      - a. Mobile Energy Services Company, LLC (Mobile Energy) is an Alabama limited liability company with offices at 1 Energy Plaza, 400 WCB Detroit, Michigan 48226. Mobile Energy is a wholly owned subsidiary of MESC Cap and is an inactive company.  
**DISSOLVED 2/03/2021**
  - n) DTE REF Holdings, LLC (DTE REF) is a Delaware limited liability company with offices at 1 Energy Plaza, 400 WCB Detroit, Michigan 48226. It is a wholly owned subsidiary of DTE ES and is a holding company.
    - 1. Belle River Fuels Holdings, LLC (Belle River Fuels) is a Delaware limited liability company with offices at 1 Energy Plaza, 400 WCB Detroit, Michigan 48226. Belle River Fuels is owned 1% by DTE REF and 99% by DTE ES. Belle River Fuels owns 100% of Belle River Fuels Company, LLC.
      - a. Belle River Fuels Company, LLC (Belle River) is a Delaware limited liability company with offices at 1 Energy Plaza, 400 WCB Detroit, Michigan 48226. Belle River is a wholly owned subsidiary of Belle River Fuels and it owns and operates a facility to produce refined coal.
    - 2. DTE REF Holdings II, LLC (REF Holdings II) is a Delaware limited liability company with offices at 1 Energy Plaza, 400 WCB Detroit, Michigan 48226. It is wholly owned by DTE REF and is a holding company.
      - a. Canton Fuels Company, LLC (Canton) is a Delaware limited liability company with offices at 1 Energy Plaza, 400 WCB Detroit, MI 48226. Canton is wholly owned by REF Holdings II and it operates a refined emissions fuel facility. **DISSOLVED 09/30/2021**

- b. ERIE FUELS COMPANY, LLC is a Delaware Limited Liability Company with offices at 1 Energy Plaza, 400 WCB Detroit, MI 48226. ERIE FUELS COMPANY, LLC is owned 1% by REF Holdings II, LLC and is the lessee of a reduced emissions fuel facility
  - c. Huron Fuels Company LLC is a Delaware limited liability company with offices at 1 Energy Plaza, 400 WCB Detroit, MI 48226. It is owned 45% by DTE REF Holdings II, LLC and leases a refined emissions fuel facility from Belle River.
  - d. Ontario Fuels Company is a Delaware limited liability company with offices at 1 Energy Plaza, 400 WCB Detroit, Michigan 48226. It is wholly owned by REF Holdings II, LLC and owns a refined coal facility and produces refined coal for sale.
  - e. Portage Fuel Company, LLC is a Delaware limited liability company with offices at 1 Energy Plaza, 400 WCB Detroit, Michigan 48226. It is wholly owned by DTE REF Holdings II, LLC and leases and operates a reduced emissions fuel facility at the Columbia Power Plant owned by Alliant Energy.
  - f. Shawnee SL, LLC is a Delaware limited liability company with offices at 1 Energy Plaza, 400 WCB Detroit, Michigan 48226. It is a wholly owned by REF Holdings II, LLC and is a holds sublicense to certain reduced emissions fuel technology.
3. KING FUELS COMPANY, LLC is a Delaware limited liability company with offices at 1 Energy Plaza, 400 WCB Detroit, Michigan 48226. It is wholly owned 20% by DTE REF and holds a company that operates a refined coal facility at the St. Clair Power Plant.  
**DISSOLVED 10/31/2021**
    - a. RCF 3 IM4, LLC is a Delaware limited liability company with offices at 1 Energy Plaza, 400 WCB Detroit, Michigan 48226. It is wholly owned by King Fuels Company and is inactive. **DISSOLVED 10/31/2021**
    - b. St. Clair Fuels Company, LLC (St. Clair Fuels) is a Delaware limited liability company with offices at 1 Energy Plaza, 400 WCB Detroit, Michigan 48226. St. Clair Fuels is 1% owned DTE REF. St. Clair Fuels owns and operates a facility to produce refined coal. **DISSOLVED 10/31/2021**
  4. Kenosha Fuels Company, LLC (Kenosha) is a Delaware limited liability company with offices at 1 Energy Plaza, 400 WCB Detroit Michigan, 48266. Kenosha is a wholly owned subsidiary of DTE REF. Kenosha owns and operates a facility to produce refined coal.  
**DISSOLVED 12/09/2021**
  5. Monroe Fuels Company, LLC (Monroe) is a Delaware limited liability company with offices at 1 Energy Plaza, 400 WCB Detroit, Michigan 48226. Monroe is 1% owned by DTE REF. It owns and operates a facility to produce refined coal.
  6. REF HOLDINGS III, LLC is a Delaware limited liability company with offices at 1 Energy Plaza, 400 WCB Detroit, Michigan 48226. REF Holdings III, LLC is 1% owned by DTE REF, it is a holding company.
    - a. Arbor Fuels Company, LLC (Arbor) is a Delaware limited liability company with offices at 1 Energy Plaza, 400 WCB Detroit, Michigan 48226. Arbor is wholly owned by REF Holdings III, LLC and operates a refined emissions fuel facility.
    - b. Chouteau Fuels Company, LLC (Chouteau) is a Delaware limited liability company with offices at 1 Energy Plaza, 400 WCB Detroit, Michigan 48226. Chouteau is wholly owned by REF Holdings III; LLC and it operates a refined emissions fuel facility.
    - c. EROC Fuels, Company, LLC (EROC) and is a Delaware limited liability Company with offices at 1 Energy Plaza, 400 WCB Detroit, Michigan 48226. It is wholly owned by REF Holdings III, LLC and operates of refined emissions fuel facility at a facility in Wisconsin.
    - d. Gallia Fuels Company, LLC, (Gallia), is a Delaware limited liability company with offices at 1 Energy Plaza, 400 WCB Detroit, Michigan 48226. Gallia is a wholly owned subsidiary of REF Holdings III, LLC and operates a refined emissions fuel production line.



- e. Jasper Fuels Company, LLC, (Jasper), is a Delaware limited liability company with offices at 1 Energy Plaza, 400 WCB Detroit, Michigan 48226. Jasper is a wholly owned subsidiary of REF Holdings III; LLC Jasper owns and operates a facility to produce refined coal.
- o) DTE Stoneman, LLC (Stoneman) is a Wisconsin limited liability company with offices at 1 Energy Plaza, 400 WCB Detroit, Michigan 48226. Stoneman is a wholly owned subsidiary of DTE ES and is an inactive company.
- p) DTE Woodland, LLC (Woodland) is a Delaware limited liability company with offices at 1 Energy Plaza, 400 WCB Detroit, Michigan 48226. Woodland is a wholly owned subsidiary of DTE ES and is engaged in biomass energy projects.
  - 1. DTE Mt. Poso, LLC (Mt. Poso) is a Delaware limited liability company with offices at 1 Energy Plaza, 400 WCB Detroit, Michigan 48226. Mt. Poso is a wholly owned subsidiary of Woodland and owns 50% of Mt. Poso Cogeneration Company, LLC.
    - a. Mt. Poso Cogeneration Company, LLC (Mt. Poso Cogen) is a Delaware limited liability company with offices at 1 Energy Plaza, 400 WCB Detroit, Michigan 48226. Mt. Poso Cogen is owned 50 % by Mt. Poso. Mt. Poso Cogen owns and operates a biomass energy facility and oil field.
  - 2. DTE Stockton, LLC (Stockton) is a Delaware limited liability company with offices at 1 Energy Plaza, 400 WCB Detroit, Michigan 48226. Stockton is a wholly owned subsidiary of Woodland and owns and operates a Biomass facility.
  - 3. Woodland Biomass Power LLC (WBP) is a California limited liability company in which Woodland is the sole member, with offices at 1 Energy Plaza, 400 WCB Detroit, Michigan 48226. This company is a wholly owned subsidiary of Woodland and owns and operates a biomass energy facility.
- 4) DTE Energy Trading, Inc. (DTE Energy Trading) is a Michigan corporation with offices 1 Energy Plaza, 400 WCB Detroit, Michigan 48226. DTE Energy Trading is a wholly owned subsidiary of DTE ER. DTE Energy Trading is engaged in wholesale and retail energy marketing. DTE Energy Trading owns DTE Energy Supply, Inc.
  - a) DTE Energy Supply, Inc. (Energy Supply) is a Michigan Corporation with offices at 1 Energy Plaza, 400 WCB Detroit, Michigan 48226. Energy Supply is a wholly owned subsidiary of DTE Energy Trading and is engaged in providing retail energy services.
- 5) DTE Generation, Inc. (DTE Generation) is a Michigan corporation with offices at 1 Energy Plaza, 400 WCB Detroit, Michigan 48226. DTE Generation is a wholly owned subsidiary of DTE ER and is a holding company. DTE Generation owns DTE River Rouge, No. 1, LLC.
  - a) DTE River Rouge, No. 1, LLC (DTE River) is a Michigan limited liability company with offices at 1 Energy Plaza, 400 WCB Detroit, Michigan 48226. DTE River is a wholly owned subsidiary of DTE Generation and is involved in a project at River Rouge Power Plant.
- C. DTE Energy Trust III (DTE III) is a Delaware statutory trust with offices at 1 Energy Plaza, Detroit, Michigan 48226-1279. DTE III may offer from time-to-time trust preferred securities.
- D. DTE Energy Ventures, Inc. (DTE Ventures) is a Michigan corporation with offices at 1 Energy Plaza, Detroit, Michigan 48226-1279. DTE Ventures is a wholly owned subsidiary of DTE and is engaged in business development. DTE Energy Ventures, Inc. owns DTE Solar Company of California.
  - 1) DTE Solar Company of California (Solar) is a Michigan corporation with offices at 1 Energy Plaza, Detroit, Michigan 48226-1279. Solar is a wholly owned subsidiary of DTE Ventures. Solar is engaged in solar photovoltaic leasing.
  - 2) Insight Energy Venture, LLC is a Michigan limited liability company with offices at The Corporation Company, 30600 Telegraph Rd, Suite 2345, Bingham Farms, Michigan 48025. Insight Energy Venture, LLC is owned 43% by DTE Energy Ventures, Inc. and 35% by Vectorform (non DTE entity). This company was formed for development, marketing, sale and delivery of energy management software, mobile applications, and hardware technologies to the Utility Industry.

- 3) Renaissance Venture Capital Fund 1, L.P. is a Limited Partnership company with offices at 600 Renaissance Center, Suite 1760 Detroit, Michigan 48243. Renaissance Venture Capital Fund 1, L.P. is owned 22% by DTE Energy Ventures, Inc. DTE Energy Ventures, Inc. holds subscription agreement with this company for limited partnership interest. Fund I is a venture capital fund of funds.
  - 4) Renaissance Venture Capital Fund 11, L.P. is a Limited Partnership company with offices at 201 S. Main Street Suite 1000 Ann Arbor, Michigan 48104. Renaissance Venture Capital Fund 11, L.P. is owned 12.7% by DTE Energy Ventures, Inc. Fund II is a venture capital fund of funds.
  - 5) Renaissance Venture Capital Fund III, L.P. is a Limited Partnership Company with offices at 201 S. Main, Ann Arbor, Michigan 48104. Renaissance Venture Capital Fund III, L.P. is owned 12.27% by DTE Energy Ventures, Inc.
- E. DTE Enterprises, Inc. (DTEE) is a Michigan corporation with offices at 1 Energy Plaza, Detroit, Michigan 48226-1279. Except where otherwise indicated, DTEE owns, directly or indirectly, all the outstanding common stock of DTE Gas Holdings, Inc., Citizens Gas Fuel Company (Citizens), and DTE Gas Enterprises, LLC (Gas Enterprises).
- 1) Citizens Gas Fuel Company (Citizens) is a Michigan corporation, is a public utility engaged in the distribution of natural gas in Michigan. Citizens' principal executive offices are located at 127 N. Main Street, Adrian, Michigan 49221. Citizens is a wholly owned subsidiary of DTEE.
  - 2) DTE Gas Holdings, Inc., a Michigan corporation with offices at 1 Energy Plaza, Detroit, Michigan 48226-1279, is the holding company for DTE Gas Company, a Michigan corporation, and DTE Gas Services Company
    - a) DTE Gas Services Company is a Michigan corporation with offices at 1 Energy Plaza, Detroit, Michigan 48226-1279. It markets natural gas as a vehicular fuel and markets energy to residential and commercial customers through a transportation brokerage pilot program. DTE Gas Services Company became inactive in 2001. DTE Gas Services Company is a wholly owned subsidiary of DTE Gas Holdings, Inc.
    - b) DTE Gas Company (DTE Gas) is a public utility engaged in the distribution and transmission of natural gas in the state of Michigan. DTE Gas's principal executive offices are located at 1 Energy Plaza, Detroit, Michigan 48226-1279. DTE Gas conducts substantially all its business in the state of Michigan and is subject to the jurisdiction of the Michigan Public Service Commission as to various phases of its operations, including gas sales rates, service, and accounting.
      1. Blue Lake Holdings, Inc. (Blue Lake) is a Michigan corporation with offices at 1 Energy Plaza, Detroit, Michigan 48226-1279. Blue Lake Holdings, Inc. is a wholly owned subsidiary of DTE Gas. It holds a 25% interest in Blue Lake Gas Storage Company.
        - a. Blue Lake Gas Storage Company is a partnership that has converted a depleted natural gas field in northern Michigan into a 46 billion cubic feet (Bcf) natural gas storage field, which it operates.
  - 3) DTE Gas Enterprises, LLC (DTEGS) is the holding company for DTEE's various diversified energy subsidiaries. DTEGS, through its subsidiaries and joint ventures, provides gathering, processing, and transmission services; engages in energy marketing activities and storage services; engages in gas and oil exploration, development, and production; and is involved in other energy-related businesses. Except where otherwise indicated, the companies set forth below are wholly owned subsidiaries of DTEGS. **NAME CHANGE TO: DT MIDSTREAM INC (DTM) AND CONVERTED FROM LLC TO INC. 1/08/2021 and JURISDICTION CHANGED FROM MICHIGAN TO DELAWARE 0/08/2021 DTM SPINOFF 07/01/2021**
  - 4) **DT MIDSTREAM, HOLDINGS, LLC – New Holding company for DT Midstream NEW FORMATION 1/13/2021 DTM SPINOFF 07/01/2021**
    - a) DTE Gas Storage Company is a Michigan corporation with offices at One Energy Plaza, Detroit, Michigan 48226-1279. It engages in the storage of natural gas and is wholly owned by DTEGS. **DTM SPINOFF 07/01/2021**
      1. Shelby Storage, L.L.C. is a Michigan limited liability company with offices at One Energy Plaza, Detroit, Michigan 48226-1279. It is used to procure storage, mineral and load rights for a storage field. Shelby Storage, L.L.C. is wholly owned by DTE Gas Storage Company. **DTM SPINOFF 07/01/2021**

2. South Romeo Gas Storage Company, L.L.C. (South Romeo) is a Michigan limited liability company with offices at One Energy Plaza, Detroit, Michigan 48226-1279. It is owned 50% by DTE Gas Storage Company. South Romeo holds a 33.3% interest in South Romeo Gas Storage Corporation. **DTM SPINOFF 07/01/2021**
    - a. South Romeo Gas Storage Corporation is a Michigan corporation which was formed to facilitate the development of the Washington 28 storage field. It is owned 33.3% by South Romeo Gas Storage Company, L.L.C. and 33.3% by DTE Gas Storage Company. **DTM SPINOFF 07/01/2021**
  3. Washington 10 Storage Corporation is a Michigan corporation with offices at 1 Energy Plaza, Detroit Michigan 48226-1279. It is wholly owned by DTE Gas Storage Company and has entered a Participation Agreement dated June 1997 with respect to the construction and leveraged lease financing of a natural gas storage facility located in Macomb County, Michigan. **DTM SPINOFF 07/01/2021**
  4. Washington Resources, LLC is a Michigan limited liability company with offices at One Energy Plaza, Detroit, Michigan 48226-1279; it is wholly owned by DTE Gas Storage Company. **DTM SPINOFF 07/01/2021**
- b) DTE Pipeline Company is a Michigan corporation with offices at One Energy Plaza, Detroit, Michigan 48226-1279. It owns interests in pipeline and processing projects directly and through the following subsidiaries and partnerships. It is wholly owned by DTE Gas Enterprises, LLC. **DTM SPINOFF 07/01/2021**
1. Bluestone Gas Corporation of New York, Inc. is a New York corporation with offices at One Energy Plaza, Detroit, Michigan 48226. It is a wholly owned subsidiary of DTE Pipeline Company, and it is engaged in natural gas gathering services. **DTM SPINOFF 07/01/2021**
  2. Bluestone Pipeline Company of Pennsylvania, LLC (Bluestone Pipeline) is a Pennsylvania company with offices at One Energy Plaza, Detroit, Michigan 48226. It is a wholly owned subsidiary of DTE Pipeline Company, and it is engaged in natural gas gathering services. **DTM SPINOFF 07/01/2021**
    - a. Susquehanna Gathering Company I, LLC (Susquehanna) is a Pennsylvania company with offices at One Energy Plaza, Detroit, Michigan 48226. It is a wholly owned subsidiary of Bluestone Pipeline and is engaged in natural gas gathering services. **DTM SPINOFF 07/01/2021**
  3. DTE Appalachia Holdings, LLC is a Delaware limited liability company with offices at One Energy Plaza, Detroit, Michigan 48226. DTE Appalachia Holdings, LLC is wholly owned by DTE Pipeline Company and owns and operates AGS and SGG Gas gathering projects and related assets. It owns 100% of M3 Appalachia Operating, LLC, and DTE Series B Holdings, LLC. **DTM SPINOFF 07/01/2021**
    - a. M3 Appalachia Operating, LLC is a Delaware Series Limited Liability Company with offices at One Energy Plaza Detroit, Michigan 48226. It is wholly owned by DTE Appalachia Holdings, LLC. This is not an operating company and consists of one series (which function as separate entities), Series B of M3 Appalachia Operating, LLC which owns and operates the Stone Gas Gathering System. **DTM SPINOFF 07/01/2021**
    - b. DTE Appalachia Gathering, LLC is a Delaware Limited Liability Company with offices at One Energy Plaza, Detroit, Michigan 48226. It is wholly owned by DTE Appalachia Holdings, LLC and it owns and operates the Appalachia Gathering System gathering assets. **DTM SPINOFF 07/01/2021**
    - c. DTE Series B Holdings, LLC is a Delaware limited liability company with offices at One Energy Plaza, Detroit, Michigan 48226. DTE Series B Holdings, LLC is wholly owned by DTE Appalachia Holdings, LLC, and owns 85% of Series B of M3 Appalachia Operating, LLC, which operates the SGG gas gathering projects and related assets. **DTM SPINOFF 07/01/2021**
      - i. Series B of M3 Appalachia Operating, LLC is a series limited liability company with offices at One Energy Plaza Detroit, Michigan 48226. It is owned 85% by DTE Series B Holdings, LLC, and DTE Appalachia Holdings, LLC is the managing member. **DTM SPINOFF 07/01/2021**

- a) Stonewall Gas Holdings; LLC is a Delaware Limited Liability Company with offices at One Energy Plaza, Detroit, Michigan 48226. It is wholly owned by Series B of M3 Appalachia Operating, LLC. It owns 100% of the equity of Stonewall Gas Gathering, LLC. **DTM SPINOFF 07/01/2021**
  - 1) Stonewall Gas Gathering, LLC is a Delaware series Limited Liability Company with offices at One Energy Plaza, Detroit, Michigan 48226 it is wholly owned by Stonewall Gas Holdings, LLC and it owns and operates the Stone Gas Gathering assets. **DTM SPINOFF 07/01/2021**
4. DTE Dawn Gateway Canada Inc. is a Canadian corporation with offices at 44 Chipman Hill, Suite 1000 Saint John, New Brunswick, E2L 2A9. DTE Dawn Gateway Canada Inc. is a wholly owned subsidiary of DTE Pipeline Company, and it owns 50% of General Partnership of Canadian side of joint venture. **DTM SPINOFF 07/01/2021**
5. DTE Louisiana Midstream Holdings 1, LLC is a Michigan limited liability company with offices at One Energy Plaza, Detroit, Michigan 48226. It is a wholly owned subsidiary of DTE Pipeline Company and holds a 99% interest in DTE Louisiana Midstream, LLC **DTM SPINOFF 07/01/2021**
6. DTE Louisiana Midstream Holdings 2, LLC is a Michigan limited liability company with offices at One Energy Plaza, Detroit, Michigan 48226. It is a wholly owned subsidiary of DTE Pipeline Company and holds a 1% interest in DTE Louisiana Midstream, **DTM SPINOFF 07/01/2021**
  - a. DTE Louisiana Midstream, LLC is a Delaware limited liability company with offices at One Energy Plaza, Detroit, Michigan 48226. DTE Louisiana Midstream, LLC is owned 99% by DTE Louisiana Midstream Holdings 1, LLC and 1% of by DTE Louisiana Midstream Holdings 2, LLC, it is engaged in acquisition of new gathering system. **DTM SPINOFF 07/01/2021**
    - i. DTE Louisiana Gathering, LLC is a Delaware limited liability company with offices at One Energy Plaza, Detroit, Michigan 48226. It is a wholly owned subsidiary of DTE Louisiana Midstream, LLC, it is engaged in gas gathering and related services. **DTM SPINOFF 07/01/2021**
      - a) DTE Gen6 Proppants, LLC is a Delaware limited liability company with offices at One Energy Plaza, Detroit, Michigan 48226. It is a wholly owned subsidiary of DTE Louisiana Gathering, LLC and is engaged in gas gathering and related services. **DTM SPINOFF 07/01/2021**
      - b) DTE LEAP Gas Gathering, LLC is a Delaware limited liability company with offices at One Energy Plaza, Detroit, Michigan 48226. It is a wholly owned subsidiary of DTE Louisiana Gathering, LLC and is engaged in gas gathering and related services. **DTM SPINOFF 07/01/2021**
      - c) DTE Specialized Water Service, LLC is a Delaware limited liability company with offices at One Energy Plaza, Detroit, Michigan 48226. It is a wholly owned subsidiary of DTE Louisiana Gathering, LLC and is engaged in gas gathering and related services. **DTM SPINOFF 07/01/2021**
7. DTE Michigan Gathering Holding Company is a Michigan corporation with offices at One Energy Plaza, Detroit, Michigan 48226-1279. DTE Michigan Gathering Holding Company is wholly owned by DTE Pipeline Company. Through the subsidiaries below, it is engaged in pipeline and gathering projects in Michigan. **DTM SPINOFF 07/01/2021**
  - a. CVB Pipeline, LLC is a Michigan limited liability company with offices at One Energy Plaza, Detroit, Michigan 48226-1279. It owns and operates a gas pipeline. It is owned 99% by DTE Michigan Gathering Holding Company. **DTM SPINOFF 07/01/2021**
  - b. DTE Michigan Gathering Company is a Michigan corporation with offices at One Energy Plaza, Detroit, Michigan 48226-1279. It owns and operates the Antrim Expansion Pipeline. It is wholly owned by DTE Michigan Gathering Holding Company. **DTM SPINOFF 07/01/2021**

- c. DTE Michigan Lateral Company is a Michigan corporation with offices at One Energy Plaza, Detroit, Michigan 48226-1279. It owns and operates a 210-mile pipeline and 325 miles of gathering lines in northern Michigan. It is wholly owned by DTE Michigan Gathering Holding Company and owns 51% of Hayes Otsego Pipeline, LLC. **DTM SPINOFF 07/01/2021**
  - i. Hayes Otsego Pipeline, LLC (Hayes Otsego) is a Michigan limited liability company with offices at One Energy Plaza, Detroit, Michigan 48226-1279. It is owned 51% by DTE Michigan Lateral Company. It is engaged in pipeline and gathering projects. **DTM SPINOFF 07/01/2021**
- d. Saginaw Bay Pipeline Company is a Michigan corporation with offices at One Energy Plaza, Detroit, Michigan 48226-1279. It currently owns and operates a 68-mile pipeline that transports natural gas and natural gas liquids from reserves in east-central Michigan to natural gas processing plants in northern Michigan. It is wholly owned by DTE Michigan Gathering Holding Company. **DTM SPINOFF 07/01/2021**
8. DTE MIDSTREAM, LLC is a Michigan limited liability company with offices in Pennsylvania. It is wholly owned by DTE Pipeline Company and is a developer of gas storage and pipeline projects - **DTM SPINOFF 07/01/2021**
9. DTE MIDSTREAM APPALACHIA, LLC is a Michigan limited liability company with offices at One Energy Plaza Detroit, Michigan 48226. It is wholly owned by DTE Pipeline Company. The company was formed to own and operate gas gathering projects and supply laterals. **DTM SPINOFF 07/01/2021**
10. DTE Ohio Midstream, LLC is a Delaware limited liability company with offices at One Energy Plaza, Detroit, MI 48226. It is wholly owned by DTE Pipeline Company and was formed to hold Oregon Energy Center lateral project. **DTM SPINOFF 07/01/2021**
11. DTE Millennium Company is a Michigan corporation with offices at One Energy Plaza, Detroit, Michigan 48226-1279. It is wholly owned by DTE Pipeline Company. It owns a 26.25% interest in Millennium Pipeline Company, L.L.C. **DTM SPINOFF 07/01/2021**
  - a. Millennium Pipeline Company, L.L.C. is a Delaware limited liability company with offices at One Blue Hill Plaza, 7<sup>th</sup> Floor, and P.O. Box 1565, Pearl River, New York 10965. It owns and operates the Millennium Pipeline system. DTE Millennium Company owns 26.25% of Millennium Pipeline Company, L.L.C. **DTM SPINOFF 07/01/2021**
12. DTE NEXUS HOLDINGS, LLC a Michigan limited liability company with offices at One Energy Plaza, Detroit, Michigan 48226. It is wholly owned by DTE Pipeline Company and is the holding company to hold DTE Pipeline's membership interest in DTE NEXUS, LLC, the owner of NEXUS Gas Transmission, LLC- **DTM SPINOFF 07/01/2021**
  - a. DTE NEXUS, LLC is a Delaware limited liability company with offices at One Energy Plaza, 2130 WCB Detroit, Michigan 48226. It is wholly owned by DTE Nexus Holdings, LLC. The company was formed to hold DTE Energy's ownership interest in Nexus Gas Transmission, LLC - **DTM SPINOFF 07/01/2021**
    - i. Nexus Gas Transmission, LLC is a Delaware limited liability Company with offices at 5400 Westheimer Court, Houston, Texas 77056. Nexus Gas Transmission, LLC is owned 50% by DTE NEXUS, LLC and operates the Greenfield Facilities. **DTM SPINOFF 07/01/2021**
      - a. GENERATION PIPELINE, LLC is an Ohio limited liability Company with offices in Columbus, OH. It is a wholly owned subsidiary of NEXUS Gas Transmission, LLC - **DTM SPINOFF 07/01/2021**
      - b. NEXUS CAPACITY SERVICES, ULC is an unlimited liability company with offices at 4529 Melrose Street, Port Alberni, BC Canada. It is wholly owned by Nexus Gas Transmission, LLC - **DTM SPINOFF 07/01/2021**
13. DTE Ohio Holdings, LLC is a Delaware limited liability company with offices at One Energy Plaza, Detroit, Michigan 48226. It is wholly owned by DTE Pipeline Company. The company was formed as a holding company for potential GSP transaction in Ohio. **DTM SPINOFF 07/01/2021**

14. DTE Renaissance Pipeline, LLC is a Michigan limited liability company with offices at One Energy Plaza, 2130 WCB, Detroit, Michigan 48226. It is wholly owned by DTE Pipeline Company. The company is intended to be a FERC regulated entity to hold APV pipeline lateral project. **DTM SPINOFF 07/01/2021**
15. DTE Tioga Gas Holdings, LLC is a Delaware limited liability company with offices at One Energy Plaza, Detroit, Michigan 48226. It is wholly owned by DTE Pipeline Company and is the holding company for DTE Tioga Gas Gathering, LLC **DTM SPINOFF 07/01/2021**.
  - a. DTE Tioga Gas Gathering, LLC is a Delaware limited liability company with offices at One Energy Plaza, Detroit, Michigan 48226. It is wholly owned by DTE Tioga Gas Holdings, LLC and owns a 3.4-mile natural gas gathering system that moves gas from producing wells to market. Eclipse Resources Corp is the producer/customer for this asset. **DTM SPINOFF 07/01/2021**
16. DTE Utica, LLC is an Ohio limited liability Company with offices at One Energy Plaza, Detroit, Michigan 48226. It is a wholly owned subsidiary of DTE Pipeline Company and is a project company for Artex Transaction. **DTM SPINOFF 07/01/2021**
17. DTE Vector Canada, Inc. is a New Brunswick corporation with offices at One Energy Plaza, Detroit, Michigan 48226-1279. It is wholly owned by DTE Pipeline Company. It holds a 39.6% limited partnership interest in Vector Pipeline Limited Partnership, an Alberta, Canada limited partnership which owns the Canadian portion of the Vector Pipeline. **DTM SPINOFF 07/01/2021**
  - a. Vector Pipeline Limited Partnership is an Alberta Canada limited partnership with offices at 38750 Seven Mile Road, Suite 490, Livonia, Michigan 48152. DTE Vector Canada, Inc. owns 39.6% of Vector Pipeline Limited Partnership and Vector Pipeline Limited own 1%. **DTM SPINOFF 07/01/2021**
18. DTE Vector Canada II, Inc. is a New Brunswick corporation. It is wholly owned by DTE Pipeline Company. It holds a 40% interest in Vector Pipeline Limited, which owns a 1% general partnership interest in Vector Pipeline Limited Partnership, an Alberta, Canada limited partnership which owns the Canadian portion of the Vector Pipeline. **DTM SPINOFF 07/01/2021**
  - a. Vector Pipeline Limited is an Alberta, Canada Corporation, with offices at 38705 Seven Mile Road, Suite 490, Livonia, Michigan 48152. It is owned 40% by DTE Vector Canada II, Inc., and it owns a 1% general partnership interest in Vector Pipeline Limited Partnership, an Alberta Canada limited partnership which owns the Canadian portion of the Vector Pipeline. **DTM SPINOFF 07/01/2021**
19. DTE Vector Company is a Michigan corporation with offices at One Energy Plaza, Detroit, Michigan 48226-1279. It is wholly owned by DTE Pipeline Company. It was formed to hold a 39.6% limited partnership interest in Vector Pipeline L.P., a Delaware Limited Partnership which owns and operates the Vector Pipeline. **DTM SPINOFF 07/01/2021**
  - a. Vector Pipeline, L.P. is a Delaware limited partnership with offices at 38750 Seven Mile Road, Suite 490, Livonia, Michigan 48152. It owns and operates the Vector Pipeline. It is owned 39.6% by DTE Vector Company and 1% by Vector Pipeline, LLC. **DTM SPINOFF 07/01/2021**
  - b. DTE Vector II Company is a Michigan corporation with offices at One Energy Plaza, Detroit, Michigan 48226-1279. It is wholly owned by DTE Pipeline Company. It holds a 40% interest in Vector Pipeline, LLC. **DTM SPINOFF 07/01/2021**
  - c. Vector Pipeline, LLC is a Delaware limited liability company with offices at 38750 Seven Mile Road, Suite 490, Livonia, Michigan 48152. It is owned 40% by DTE Vector II Company and owns a 1% general partnership interest in Vector Pipeline L.P., a Delaware limited partnership which owns and operates the Vector Pipeline. **DTM SPINOFF 07/01/2021**
- c) DTE Oil & Gas Group, Inc. is a Michigan corporation with offices at One Energy Plaza, Detroit, Michigan 48226-1279. It is wholly owned by DTE Gas Enterprises, LLC. It is engaged in natural gas and oil exploration, development, and production through the following subsidiaries:**DISSOLVED 3/17/2021**

1. MCNIC Enhanced Production, Inc. is a wholly owned subsidiary of DTE Oil & Gas Group, Inc. It owns a 75% interest in Otsego EOR, L.L.C. It is a Michigan corporation with offices at One Energy Plaza, Detroit, Michigan 48226-1279. **DISSOLVED 3/17/2021**
    - a. Otsego EOR, L.L.C. is a Michigan limited liability company with offices at One Energy Plaza, Detroit, Michigan 48226-1279 and is owned 75% by MCNIC Enhanced Production, Inc. **DISSOLVED 3/19/2021**
  2. MCNIC Oil & Gas Midcontinent, Inc., a wholly owned subsidiary of DTE Oil & Gas Group, Inc. It is a Michigan corporation with offices at One Energy Plaza, Detroit, Michigan 48226-1279. **DISSOLVED 3/17/2021**
  3. MCNIC Oil & Gas Properties, Inc., a wholly owned subsidiary of DTE Oil & Gas Group, Inc., is a Michigan corporation with offices at One Energy Plaza, Detroit, Michigan 48226-1279. **DISSOLVED 3/17/2021**
  4. Otsego Exploration Company, L.L.C., a wholly owned subsidiary of DTE Oil & Gas Group, Inc., is a Michigan limited liability company with offices at One Energy Plaza, Detroit, Michigan 48226-1279. **DISSOLVED 3/19/2021**
- d) MCN International Corporation is a Michigan corporation with offices at One Energy Plaza, Detroit, Michigan 48226-1279. It was formed as a holding company for DTEE's international subsidiaries and is wholly owned by DTE Gas Enterprises, LLC. **DISSOLVED 3/17/2021**
1. MCNIC International Holdings of Grand Cayman, Cayman Islands is wholly owned by MCN International Corporation and is an inactive company. **DISSOLVED 10/31/2016**
  2. MCNIC UAE Limited of Grand Cayman, Cayman Island is wholly owned by MCN International Corporation and was formed to hold a 39% interest in a United Arab Emirate fertilizer plant project. Subsequently, MCNIC UAE Limited converted its equity interest into a loan. The loan was sold in 2004, leaving MCNIC UAE with no remaining assets and is an F company. **DISSOLVED 10/31/20216**
- F. Syndeco Realty Corporation (Syndeco) is a Michigan corporation with offices at 1 Energy Plaza, Detroit, Michigan 48226-1279. Syndeco is a wholly owned subsidiary of DTE. Syndeco is engaged in real estate projects.
- 1) Detroit Redevelopment and Rehabilitation Investments, LLC is a Michigan Company with offices at 1 Energy Plaza, Detroit, Michigan 48226-1289. It is a wholly owned subsidiary of Syndeco and is engaged in real estate acquisitions.
  - 2) Syndeco Meadowbrook, LLC (Meadowbrook) is a Michigan limited liability company with offices at 1 Energy Plaza, Detroit, Michigan 48226-1279. Meadowbrook is a wholly owned subsidiary of Syndeco and owns property in Novi for future development.
  - 3) Syndeco Plaza L.L.C. (Syndeco Plaza) is a Michigan limited liability company with offices at 1 Energy Plaza, Detroit, Michigan 48226-1279. Syndeco Plaza is a wholly owned subsidiary of Syndeco and is engaged in real estate projects.
  - 4) Syndeco Plaza Unit Acquisition LLC (Plaza Unit) is a Michigan limited liability company with offices at 1 Energy Plaza, Detroit, Michigan 48226-1279. Syndeco owns 100% of this entity.
- G. DTE Electric Holdings, LLC a Michigan limited liability company with offices at 1 Energy Plaza, Detroit, Michigan 48226-1279. It is a wholly owned subsidiary of DTE Energy Company and holds 100% interest in DTE Electric Company. It is a holding company for DTE Electric Company and DTE Electric Enterprises, LLC.
- 1) DTE Electric Enterprises, LLC a Michigan limited liability company with offices at 1 Energy Plaza, Detroit, Michigan 48226-1279. It is a wholly owned subsidiary of DTE Electric Holdings, LLC. It holds 100% interest in DTE Sustainable Generation Holdings, LLC and DTE Wires, LLC. It was formed to structure the Wind Farm purchases.
    - a) DTE Sustainable Generation Holdings, LLC a Michigan limited liability company with offices at 1 Energy Plaza, Detroit, Michigan 48226-1279. It is a wholly owned subsidiary of DTE Electric Enterprises, LLC. This entity was created to hold the structure for wind farm purchases. It holds 100% interest in DTE Garden Wind Farm, LLC and DTE Stoney Corners Wind Farm, LLC.

1. DTE Big Turtle Wind Farm I, LLC a Michigan limited liability company with offices at 1 Energy Plaza, Detroit, Michigan 48226-1279. It is a wholly owned subsidiary of DTE Sustainable Generation Holdings, LLC, and is a wind farm.
    - a. Big Turtle Interconnection, LLC a Michigan limited liability company wind farm, it is owned 40% by DTE Big Turtle Wind Farm and 60% owned by outside entity.
  2. DTE Garden Wind Farm, LLC a Michigan limited liability company with offices at 1 Energy Plaza, Detroit, Michigan 48226-1279. It is a wholly owned subsidiary of DTE Sustainable Generation Holdings, LLC, and is a wind farm.
  3. DTE Stoney Corners Wind Farm, LLC a Michigan limited liability company with offices at 1 Energy Plaza, Detroit, Michigan 48226-1279. It is a wholly owned subsidiary of DTE Sustainable Generation Holdings, LLC, and is a wind farm.
  4. DTE Wires, LLC a Michigan limited liability company with offices at 1 Energy Plaza, Detroit, Michigan 48226-1279. It is a wholly owned subsidiary of DTE Electric Enterprises, LLC and is part of the structure for wind farm purchases.
- 2) DTE Electric Company, (DTE Electric), is incorporated in Michigan and is a Michigan public utility. It is engaged in the generation, purchase, distribution, and sale of electric energy in Southeastern Michigan. It also owned and operated a steam heating system in Detroit, Michigan, which was sold in January 2003. On January 1, 1996, DTE Electric became a wholly owned subsidiary of the DTE Energy Company. DTE Electric's address is 1 Energy Plaza, Detroit, Michigan 48226-1279. On 09/17/2019 DTE Electric Company parent changed from DTE Energy Company to DTE Electric Holdings, LLC.
  - 3) Detroit Edison Trust I (DET I) is a Delaware statutory trust with offices at 1 Energy Plaza, Detroit, Michigan 48226-1279. DET I may offer from time-to-time trust preferred securities.
  - 4) Detroit Edison Trust II (DET II) is a Delaware statutory trust with offices at 1 Energy Plaza, Detroit, Michigan 48226-1279. DET II may offer from time-to-time trust preferred securities.
  - 5) Detroit Edison Trust III (DET III) is a Delaware statutory trust with offices at 1 Energy Plaza, Detroit, Michigan 48226-1279. DET III may offer from time-to-time trust preferred securities.
  - 6) DTE Electric Securitization Funding I, LLC is a Delaware limited liability company with offices at 1 Energy Plaza, Detroit, Michigan 48226. It is a wholly owned subsidiary of DTE Electric Company and is a special purpose entity for securitization.  
**NEW FORMATION 07/22/2021**
  - 7) Midwest Energy Resources Company (MERC) is a Michigan corporation with offices at One Energy Plaza, Detroit, Michigan 48226-1279. MERC is a wholly owned subsidiary of DTE Electric and is engaged in operating a coal-transshipment facility in Superior, Wisconsin. It owns 50% of Venture Fuels.
    - a) Venture Fuels is a Colorado partnership formed for marketing coal in the Great Lakes Region and is 50% owned by MERC.
  - 8) St. Clair Energy Corporation (St. Clair) is a Michigan corporation with offices at One Energy Plaza, Detroit, Michigan 48226-1279. St. Clair is a wholly owned subsidiary of DTE Electric and is engaged in fuel procurement.
  - 9) The Detroit Edison Securitization Funding, L.L.C. (Securitization Funding) is a Michigan limited liability company with offices at 1 Energy Plaza, Detroit, Michigan 48226-1279. Securitization Funding is a wholly owned subsidiary of DTE Electric and is a special purpose entity established to recover certain stranded costs, called Securitization Property by Michigan Statute.
  - 10) The Edison Illuminating Company of Detroit (EIC) is a Michigan corporation with offices at 1 Energy Plaza, Detroit, Michigan 48226-1279. EIC is a wholly owned subsidiary of DTE Electric and holds real estate.
- H. Wolverine Energy Services, Inc. (Wolverine) is a Michigan corporation with offices at 1 Energy Plaza, Detroit, Michigan 48226-1279. Wolverine is a wholly owned subsidiary of DTE Energy Company and is a holding company.
- 1) DTE Energy Solutions, Inc. (Solutions) is a Michigan corporation with offices at 1 Energy Plaza, Detroit, Michigan 48226-1279. Solutions is a wholly owned subsidiary of Wolverine and is engaged in system-based energy related products and services.



- a) DTE Engineering Services, Inc., (DTE Engineering Services), is a Michigan corporation with offices at 1 Energy Plaza, Detroit, Michigan 48226-1279. DTE Engineering Services is a wholly owned subsidiary of Solutions. DTE Engineering Services is engaged in professional engineering services.
- 2) DTE Energy Technologies, Inc. (Technologies) is a Michigan corporation with offices at 1 Energy Plaza, Detroit, Michigan 48226-1279. Technologies are a wholly owned subsidiary of Wolverine and are engaged in energy solutions for industrial, commercial, and small businesses.
  - a) Alliance Energy Companies, Ltd. (Alliance) is a Minnesota corporation with offices at 1715 Lake Drive West, Chanhassen, Minnesota 55317-8580. Alliance is a wholly owned subsidiary of Technologies.

**Attachment 12(1)(i)-1**

Name of Respondent DTE Electric Company	This Report Is: (1) <input checked="" type="checkbox"/> An Original (2) <input type="checkbox"/> A Resubmission	Date of Report (Mo, Da, Yr) 04/29/2022	Year of Report 2021/Q4
--	---	--	---------------------------

**RECEIVABLES FROM ASSOCIATED COMPANIES (Accounts 145, 146)**

- |   |   |
|---|---|
| <p>1. Report particulars of notes and accounts receivable from associated companies* at end of year.</p> <p>2. Provide separate headings and totals for Accounts 145, Notes Receivable from Associated Companies, and 146, Accounts Receivable from Associated Companies, in addition to a total for the combined accounts.</p> <p>3. For notes receivable, list each note separately and state purpose for which received. Show also in column (a) date of note, date of maturity and interest rate.</p> | <p>4. If any note was received in satisfaction of an open account, state the period covered by such open account.</p> <p>5. Include in column (f) interest recorded as income during the year including interest on accounts and notes held at any time during the year.</p> <p>6. Give particulars of any notes pledged or discounted, also of any collateral held as guarantee of payment of any note or account.</p> |
|---|---|

\* NOTE: "Associated companies" means companies or persons that, directly or indirectly, through one or more intermediaries, control, or are controlled by, or are under common control with, the account company. This includes related parties.

"Control" (including the terms "controlling," "controlled by," and "under common control with") means the possession, directly or indirectly, of the power to direct or cause the direction of the management and policies of a company, whether such power is exercised through one or more intermediary companies, or alone, or in conjunction with, or pursuant to an agreement, and whether such power is established through a majority or minority ownership or voting of securities, common directors, officers or stockholders, voting trusts, holding trusts, associated companies, contract or any other direct or indirect means.

Line No.	Particulars (a)	Balance Beginning of Year (b)	Totals for Year		Balance End of Year (e)	Interest for Year (f)
			Debits (c)	Credits (d)		
1	<b>Account 145</b>					
2	DTE Energy Company	—	—	—	—	2,367
3	Midwest Energy Resources Company	—	32,504,524	—	32,504,524	15,062
4	Total Notes Receivable	—	32,504,524	—	32,504,524	17,429

Note: Note Receivable to Associated Companies arise from the Inter-Company Loan Agreement

Purpose: To provide a line of credit to associated companies.

Maturity Date: N/A

Interest Rate: Adjusted monthly based on the prior month commercial paper market rate. December 2021 rate 0.1255%

5	<b>Account 146</b>					
6	DTE Energy Company	215,675	1,937,139	—	2,152,814	
7	DTE Energy Resources, LLC	—	71	—	71	
8	DTE Generation, Inc	2,512	2,882	—	5,394	
9	River Rouge Unit No. 1 LLC	476	—	476	—	
10	DTE PCI Enterprises Co	434,249	—	74,033	360,216	
11	Metro Energy, LLC	433,378	45,363	—	478,741	
12	St. Clair Energy Company	3,629	—	—	3,629	
13	Belle River Fuels Co.,LLC	16,102,403	—	16,102,403	—	
14	St Clair Fuels Co., LLC	52,763	—	52,763	—	
15	DTE Energy Ventures Inc.	3,740	—	—	3,740	
16	DTE Gas Company	1,164,443	—	1,164,443	—	
17	DTE Pipeline Co*	4,320	—	4,320	—	
18	DTE Dearborn	1,920	—	1,920	—	
19	DTE ES Operations, LLC	—	6,684	—	6,684	
20	St. Paul Cogeneration, LLC	—	81	—	81	
21	Monroe Fuels Company, LLC	33,146,788	—	33,139,685	7,103	
22	DTE Marietta, LLC	1,216	—	1,216	—	
23	Utility Services of Lansing LLC	448	—	448	—	
24	DTE ST. Bernard, LLC	11,556	—	—	11,556	
25	Huron Fuels Co LLC	12,499,623	—	5,749,647	6,749,976	

\*Affiliated companies prior to DTE Energy spin-off of DT Midstream on July 1, 2021.

Name of Respondent		This Report Is:		Date of Report	Year of Report	
DTE Electric Company		(1) <input checked="" type="checkbox"/> An Original (2) <input type="checkbox"/> A Resubmission		(Mo, Da, Yr) 04/29/2022	2021/Q4	
<b>RECEIVABLES FROM ASSOCIATED COMPANIES (Accounts 145, 146) (Continued)</b>						
1. Report particulars of notes and accounts receivable from associated companies* at end of year. 2. Provide separate headings and totals for Accounts 145, Notes Receivable from Associated Companies, and 146, Accounts Receivable from Associated Companies, in addition to a total for the combined accounts. 3. For notes receivable, list each note separately and state purpose for which received. Show also in column (a) date of note, date of maturity and interest rate.			4. If any note was received in satisfaction of an open account, state the period covered by such open account. 5. Include in column (f) interest recorded as income during the year including interest on accounts and notes held at any time during the year. 6. Give particulars of any notes pledged or discounted, also of any collateral held as guarantee of payment of any note or account.			
<p>* NOTE: "Associated companies" means companies or persons that, directly or indirectly, through one or more intermediaries, control, or are controlled by, or are under common control with, the account company. This includes related parties.</p> <p>"Control" (including the terms "controlling," "controlled by," and "under common control with") means the possession, directly or indirectly, of the power to direct or cause the direction of the management and policies of a company, whether such power is exercised through one or more intermediary companies, or alone, or in conjunction with, or pursuant to an agreement, and whether such power is established through a majority or minority ownership or voting of securities, common directors, officers or stockholders, voting trusts, holding trusts, associated companies, contract or any other direct or indirect means.</p>						
Line No.	Particulars (a)	Balance Beginning of Year (b)	Totals for Year		Balance End of Year (e)	Interest for Year (f)
			Debits (c)	Credits (d)		
26	DTE Energy Services, Inc.	—	13,582	—	13,582	
27	DTE Electric Enterprises	49	—	—	49	
28	DTE Sustainable Generation Holdings LLC	3,021	1,362	—	4,383	
29	DTE Atlantic, LLC	192	1,740	—	1,932	
30	Big Turtle Interconnection	3,692	190	—	3,882	
31	DTE Energy Center Operations	—	125	—	125	
32	DTE Coke Operations, LLC	—	275	—	275	
33	DTE Energy Foundation	—	1,836	—	1,836	
34	DTE Pontiac North, LLC	—	652	—	652	
35	Total Accounts Receivable	64,086,093	2,011,982	56,291,354	9,806,721	
36						
37						
38						
39						
40						
41						
42						
43						
44						
45						
46						
47						
48						
49						
50						
51	TOTAL	64,086,093	34,516,506	56,291,354	42,311,245	17,429

**Attachment 12(1)(i)-2**

Name of Respondent DTE Electric Company	This Report Is: (1) <input checked="" type="checkbox"/> An Original (2) <input type="checkbox"/> A Resubmission	Date of Report (Mo, Da, Yr) 04/29/2022	Year of Report 2021/Q4
--	---	--	---------------------------

**PAYABLES TO ASSOCIATED COMPANIES\* (Accounts 233, 234)**

1. Report particulars of notes and accounts payable to associated companies at end of year.
2. Provide separate totals for Accounts 233, Notes Payable to Associated Companies, and 234, Accounts Payable to Associated Companies, in addition to total for the combined accounts.
3. List each note separately and state the purpose for which issued. Show also in column (a) date of note, maturity and interest rate.
4. Include in column (f) the amount of any interest expense during the year on notes or accounts that were paid before the end of the year.
5. If collateral has been pledged as security to the payment of any note or account, describe such collateral.

**\*See definition on page 226B**

Line No.	Particulars (a)	Balance Beginning of Year (b)	Totals for Year		Balance End of Year (e)	Interest for Year (f)
			Debits (c)	Credits (d)		
1	<b>Account 233</b>					
2	DTE Energy Company	1,377	—	36,399,419	36,400,796	4,087
3	Midwest Energy Resources Company	5,329,122	5,329,122	—	—	108,070
4	Total Notes Payable	5,330,499	5,329,122	36,399,419	36,400,796	112,157
5	Note: Notes Payable to associated companies arise from the Inter-Company Loan Agreement.					
6	Purpose: To provide a line of credit from associated companies.					
7	Maturity Date: N/A					
8	Interest Rate: Adjusted monthly based on the prior month commercial paper market rate. December 2021 rate 0.1255%					
9	<b>Account 234</b>					
10	DTE Energy Resources, LLC	121,122	121,122	—	—	
11	DTE Biomass Energy, Inc.	14,437	14,437	—	—	
12	Westside Gas Producers LLC	228	—	—	228	
13	DTE Energy Trading	70,263	17,751	—	52,512	
14	DTE Energy Services, Inc.	7,638	7,638	—	—	
15	Syndeco Realty Corporation	33,448	33,448	—	—	
16	Midwest Energy Resources Company	1,197,363	—	57,352	1,254,715	
17	Citizens Gas Fuel Company	16,015	16,015	—	—	
18	DTE Gas Enterprises, LLC**	31,328	31,328	—	—	
19	DTE Millennium Company**	4	4	—	—	
20	DTE Vector Company**	3	3	—	—	
21	DTE Gas Services Company	4,074	—	—	4,074	
22	Blue Water Renewables, Inc.	193,942	—	13,833	207,775	
23	DTE Energy Center LLC	3,095	3,095	—	—	
24	DTE Gas Company	—	—	8,031,123	8,031,123	
25	DTE Energy Corporate Services LLC	58,001,483	—	12,158,249	70,159,732	

\*\*Affiliated companies prior to DTE Energy spin-off of DT Midstream on July 1, 2021.

Name of Respondent DTE Electric Company	This Report Is: (1) <input checked="" type="checkbox"/> An Original (2) <input type="checkbox"/> A Resubmission	Date of Report (Mo, Da, Yr) 04/29/2022	Year of Report 2021/Q4
--	---	--	---------------------------

**PAYABLES TO ASSOCIATED COMPANIES\* (Accounts 233, 234)**

1. Report particulars of notes and accounts payable to associated companies at end of year.
2. Provide separate totals for Accounts 233, Notes Payable to Associated Companies, and 234, Accounts Payable to Associated Companies, in addition to total for the combined accounts.
3. List each note separately and state the purpose for which issued. Show also in column (a) date of note, maturity and interest rate.
4. Include in column (f) the amount of any interest expense during the year on notes or accounts that were paid before the end of the year.
5. If collateral has been pledged as security to the payment of any note or account, describe such collateral.

**\*See definition on page 226B**

Line No.	Particulars (a)	Balance Beginning of Year (b)	Totals for Year		Balance End of Year (e)	Interest for Year (f)
			Debits (c)	Credits (d)		
26	DTE Stoney Corners Wind Farm	558,242	—	747,025	1,305,267	
27	DTE Garden Wind Farm	218,437	—	266,407	484,844	
28	DTE Big Turtle Wind Farm	412,429	—	218,164	630,593	
29	Total Accounts Payable	60,883,551	244,841	21,492,153	82,130,863	—
30						
31						
32						
33						
34						
35						
36						
37						
38						
39						
40						
41						
42						
43						
44						
45						
46						
47						
48						
49						
50	<b>TOTAL</b>	<b>66,214,050</b>	<b>5,573,963</b>	<b>57,891,572</b>	<b>118,531,659</b>	<b>112,157</b>

**Attachment 12(1)(i)-3**



Name of Respondent DTE Electric Company		This Report Is: (1) <input checked="" type="checkbox"/> An Original (2) <input type="checkbox"/> A Resubmission		Date of Report (Mo, Da, Yr) 04/29/2022	Year of Report 2021/Q4
<b>SUMMARY OF COSTS BILLED TO ASSOCIATED COMPANIES</b>					
1. In column (a) report the name of the associated company.			services provided (administrative and general expenses, dividends declared, etc.).		
2. In column (b) describe the affiliation (percentage ownership, etc. ).			4. In columns (d) and (e) report the amount classified to operating income and the account(s) in which reported.		
3. In column (c) describe the nature of the goods and					
Line No.	Company (a)	Affiliation (b)	Description: Nature of Goods and Services (c)	Account Number (d)	Amount Classified to Operating Income (e)
1	DTE Energy Company	Holding Company	Interdepartmental Rents	455	1,420,724
2					
3	DTE Biomass Energy, Inc.	Affiliate	Interdepartmental Rents	455	487,418
4					
5	DTE Energy Trading, Inc.	Affiliate	Interdepartmental Rents	455	2,009,729
6			Operations & Maintenance	502-596	13,221
7					
8	DTE Energy Services, Inc.	Affiliate	Interdepartmental Rents	455	2,940,237
9			Administrative & General	920-926	52,605
10					
11	DTE PCI Enterprises Co	Affiliate	Merch/Job Revenue		
12			Merch/Job Expense		
13			Fuel	501	11,331
14					
15	EES Coke Battery, LLC	Affiliate	Fuel	501	292,348
16					
17	Midwest Energy Res CO	Affiliate	Fuel inventory		
18			Taxes Other Than Income	408	12,307
19			Fuel	501	242,699
20			Administrative & General	920-926	230,364
21					
22	Bell River Fuels Co., LLC	Affiliate	Merch/Job Expense		
23					
24	St. Clair Fuels Co., LLC	Affiliate	Fuel	501	4,434,640
25			Administrative & General	920-926	5,714
26					
27	DTE Gas Company	Affiliate	Capital		
28			Taxes Other Than Income	408	83,721
29			Interdepartmental Rents	455	43,313,636
30			Administrative & General	920-926	8,824,686
<b>TOTAL</b>					<b>78,158,583</b>

Name of Respondent		This Report Is:		Date of Report	Year of Report	
DTE Electric Company		(1) <input checked="" type="checkbox"/> An Original (2) <input type="checkbox"/> A Resubmission		(Mo, Da, Yr) 04/29/2022	2021/Q4	
SUMMARY OF COSTS BILLED TO ASSOCIATED COMPANIES (Continued)						
5. In columns (f) and (g) report the amount classified to non-operating income and the account(s) in which reported.			7. In column (j) report the total.			
6. In columns (h) and (i) report the amount classified to the balance sheet and the account(s) in which reported.			8. In column (k) indicate the pricing method (cost, per contract terms, etc.)			
Account Number	Amount Classified to Non-Operating Income	Account Number	Amount Classified to Balance Sheet	Total	Pricing Method	Line No.
(f)	(g)	(h)	(i)	(j)	(k)	
				1,420,724	Cost	1
						2
				487,418	Cost	3
						4
				2,009,729	Cost	5
				13,221		6
						7
				2,940,237	Cost	8
				52,605	Cost	9
415	1,748,097			1,748,097	Cost	10
416	358,476			358,476	Cost	11
				11,331	Contract	12
						13
				292,348	Cost	14
						15
		151	201,088	201,088	Cost	16
				12,307	Cost	17
				242,699	Cost	18
				230,364	Cost	19
						20
416	19,905,048			19,905,048	Cost	21
						22
				4,434,640	Contract	23
				5,714	Cost	24
						25
		107	347,867	347,867	Cost	26
				83,721	Cost	27
				43,313,636	Cost	28
				8,824,686	Cost	29
						30
	381,512,271		590,479	460,261,333		

Name of Respondent		This Report Is:		Date of Report	Year of Report
DTE Electric Company		(1) <input checked="" type="checkbox"/> An Original (2) <input type="checkbox"/> A Resubmission		(Mo, Da, Yr) 04/29/2022	2021/Q4
SUMMARY OF COSTS BILLED TO ASSOCIATED COMPANIES (Continued)					
1. In column (a) report the name of the associated company.			services provided (administrative and general expenses, dividends declared, etc.).		
2. In column (b) describe the affiliation (percentage ownership, etc. ).			4. In columns (d) and (e) report the amount classified to operating income and the account(s) in which reported.		
3. In column (c) describe the nature of the goods and					
Line No.	Company (a)	Affiliation (b)	Description: Nature of Goods and Services (c)	Account Number (d)	Amount Classified to Operating Income (e)
1	Citizens Gas Fuel Co.	Affiliate	Interdepartmental Rents	455	167,294
2					
3	DTE Pipeline Company	Affiliate*	Interdepartmental Rents	455	1,146,900
4			Administrative & General	920-926	29,058
5					
6	DTE Gas Storage Company	Affiliate*	Interdepartmental Rents	455	68,174
7					
8	Monroe Fuels Company, LLC	Affiliate	Merch/Job Expense		
9			Fuel	501	6,411,676
10					
11	Blue Water Renewables	Affiliate	Operations & Maintenance	502-596	25,475
12					
13	Huron Fuels Co LLC	Affiliate	Merch/Job Expense		
14			Fuel	501	5,213,379
15					
16	DTE Sustain General Holdings LLC	Affiliate	Interdepartmental Rents	455	17,661
17			Administrative & General	920-926	36,358
18					
19	DTE Stoney Corners	Affiliate	Taxes Other Than Income	408	12,290
20			Operations & Maintenance	502-596	50,485
21			Administrative & General	920-926	230,493
22					
23	DTE Garden Wind Farm LLC	Affiliate	Capital		
24			Taxes Other Than Income	408	10,964
25			Operations & Maintenance	502-596	19,118
26			Administrative & General	920-926	215,827
27					
28	DTE Big Turtle Farm LLC	Affiliate	Taxes Other Than Income	408	5,356
29			Electric Resale	447	19,442
30			Administrative & General	920-926	103,253
<b>TOTAL</b>					<b>78,158,583</b>

\*Affiliated companies prior to DTE Energy spin-off of DT Midstream on July 1, 2021.

Name of Respondent DTE Electric Company		This Report Is: (1) <input checked="" type="checkbox"/> An Original (2) <input type="checkbox"/> A Resubmission		Date of Report (Mo, Da, Yr) 04/29/2022	Year of Report 2021/Q4	
<b>SUMMARY OF COSTS BILLED TO ASSOCIATED COMPANIES (Continued)</b>						
5. In columns (f) and (g) report the amount classified to non-operating income and the account(s) in which reported.				7. In column (j) report the total.		
6. In columns (h) and (i) report the amount classified to the balance sheet and the account(s) in which reported.				8. In column (k) indicate the pricing method (cost, per contract terms, etc.)		
Account Number (f)	Amount Classified to Non-Operating Income (g)	Account Number (h)	Amount Classified to Balance Sheet (i)	Total (j)	Pricing Method (k)	Line No.
				167,294	Cost	1
						2
				1,146,900	Cost	3
				29,058	Cost	4
						5
				68,174	Cost	6
						7
416	281,613,729			281,613,729	Cost	8
				6,411,676	Cost	9
						10
				25,475	Cost	11
						12
416	77,886,921			77,886,921	Cost	13
				5,213,379	Contract	14
						15
				17,661	Contract	16
				36,358	Contract	17
						18
				12,290	Contract	19
				50,485	Contract	20
				230,493	Contract	21
						22
		107	41,524	41,524	Contract	23
				10,964	Contract	24
				19,118	Contract	25
				215,827	Contract	26
						27
				5,356	Contract	28
				19,442	Contract	29
				103,253	Contract	30
	381,512,271		590,479	460,261,333		

**Attachment 12(1)(i)-4**

Name of Respondent DTE Electric Company		This Report Is: (1) <input checked="" type="checkbox"/> An Original (2) <input type="checkbox"/> A Resubmission	Date of Report (Mo, Da, Yr) 04/29/2022	Year of Report 2021/Q4	
<b>SUMMARY OF COSTS BILLED FROM ASSOCIATED COMPANIES</b>					
1. In column (a) report the name of the associated company.			services provided (administrative and general expenses, dividends declared, etc.).		
2. In column (b) describe the affiliation (percentage ownership, etc. ).			4. In columns (d) and (e) report the amount classified to operating income and the account(s) in which reported.		
3. In column (c) describe the nature of the goods and					
Line No.	Company (a)	Affiliation (b)	Description: Nature of Goods and Services (c)	Account Number (d)	Amount Classified to Income (e)
1	DTE Energy Company	Holding Company	Administrative & General	920-930.2	3,974,010
2					
3	DTE Energy Resources, LLC	Affiliate	Fuel	501	9,687
4			Customer Service	901-916	6,851
5					
6	DTE Energy Services, inc	Affiliate	Merch/Job Expense		
7					
8	Midwest Energy Res CO	Affiliate	Fuel Inventory		
9			Fuel	501	9,600,934
10			Operations & Maintenance	502-596	178,383
11					
12	St. Clair Fuels Co., LLC	Affiliate	Fuel Inventory		
13			Fuel	501	4,169,444
14					
15	DTE Gas Company	Affiliate	Other Income & Deductions		
16			Fuel	501	217,208
17			Rent Expense	931	901,355
18			Operations & Maintenance	502-596	3,698,906
19			Customer Service	901-916	24,680
20					
21	Monroe Fuels Company, LLC	Affiliate	Fuel Inventory		
22					
23	Blue Water Renewables, Inc	Affiliate	Purchased power	555	2,521,966
24					
25	DTE Energy Corporate Services, LLC	Affiliate	Capital		
26			Taxes Other Than Income	408	10,853,150
27			Merch/Job Expense		
28			Other Income & Deductions		
29			Fuel	501	2,455,511
30			Rent Expense	931	1,891,280
<b>TOTAL</b>					<b>422,632,499</b>

Name of Respondent DTE Electric Company		This Report Is: (1) <input checked="" type="checkbox"/> An Original (2) <input type="checkbox"/> A Resubmission		Date of Report (Mo, Da, Yr) 04/29/2022	Year of Report 2021/Q4	
<b>SUMMARY OF COSTS BILLED FROM ASSOCIATED COMPANIES (Continued)</b>						
<p>5. In columns (f) and (g) report the amount classified to non-operating income and the account(s) in which reported.</p> <p>6. In columns (h) and (i) report the amount classified to the balance sheet and the account(s) in which reported.</p> <p>7. In column (j) report the total.</p> <p>8. In column (k) indicate the pricing method (cost, per contract terms, etc.)</p>						
Account Number (f)	Amount Classified to Non-Operating Income (g)	Account Number (h)	Amount Classified to Balance Sheet (i)	Total (j)	Pricing Method (k)	Line No.
				3,974,010	Contract	1
						2
				9,687	Contract	3
				6,851	Contract	4
						5
416	747,062			747,062	Contract	6
						7
		151	6,462,643	6,462,643	Contract	8
				9,600,934	Contract	9
				178,383	Contract	10
						11
		151	74,357,956	74,357,956	Contract	12
				4,169,444	Contract	13
						14
426	10,000			10,000	Contract	15
				217,208	Contract	16
				901,355	Contract	17
				3,698,906	Contract	18
				24,680	Contract	19
						20
		151	321,854,907	321,854,907	Contract	21
						22
				2,521,966	Contract	23
						24
		107	180,984,304	180,984,304	Contract	25
				10,853,150	Contract	26
416	719,496			719,496	Contract	27
417 & 426	8,521,998			8,521,998	Contract	28
				2,455,511	Contract	29
				1,891,280	Contract	30
	9,998,556		737,728,528	1,170,359,583		

Name of Respondent DTE Electric Company		This Report Is: (1) <input checked="" type="checkbox"/> An Original (2) <input type="checkbox"/> A Resubmission	Date of Report (Mo, Da, Yr) 04/29/2022	Year of Report 2021/Q4		
<b>SUMMARY OF COSTS BILLED FROM ASSOCIATED COMPANIES (Continued)</b>						
1. In column (a) report the name of the associated company.			services provided (administrative and general expenses, dividends declared, etc.).			
2. In column (b) describe the affiliation (percentage ownership, etc. ).			4. In columns (d) and (e) report the amount classified to operating income and the account(s) in which reported.			
3. In column (c) describe the nature of the goods and						
Line No.	Company (a)	Affiliation (b)	Description: Nature of Goods and Services (c)	Account Number (d)	Amount Classified to Income (e)	
1	DTE Energy Corporate Services, LLC	Affiliate	Maintenance Gen Plant	935	5,178,867	
2			Operations & Maintenance	500, 502-596	37,582,387	
3			Customer Service	901-916	84,458,565	
4			Administrative & General	920-930,2	239,524,834	
5						
6	Huron Fuels Co LLC	Affiliate	Fuel Inventory			
7			Fuel	501	5,144,086	
8						
9	DTE Stoney Corners	Affiliate	Allowance			
10			Purchased Power	555	5,097,032	
11						
12	DTE Garden Wind Farm LLC	Affiliate	Allowance			
13			Purchased Power	555	1,930,453	
14						
15	DTE Blue Turtle Wind Farm LLC	Affiliate	Purchased Power	555	3,212,910	
16						
17						
18						
19						
20						
21						
22						
23						
24						
25						
26						
27						
28						
29						
30						
<b>TOTAL</b>					<b>422,632,499</b>	



Name of Respondent DTE Electric Company		This Report Is: (1) <input checked="" type="checkbox"/> An Original (2) <input type="checkbox"/> A Resubmission		Date of Report (Mo, Da, Yr) 04/29/2022	Year of Report 2021/Q4	
<b>SUMMARY OF COSTS BILLED FROM ASSOCIATED COMPANIES (Continued)</b>						
5. In columns (f) and (g) report the amount classified to non-operating income and the account(s) in which reported.				7. In column (j) report the total.		
6. In columns (h) and (i) report the amount classified to the balance sheet and the account(s) in which reported.				8. In column (k) indicate the pricing method (cost, per contract terms, etc.)		
Account Number (f)	Amount Classified to Non-Operating Income (g)	Account Number (h)	Amount Classified to Balance Sheet (i)	Total (j)	Pricing Method (k)	Line No.
				5,178,867	Contract	1
				37,582,387	Contract	2
				84,458,565	Contract	3
				239,524,834	Contract	4
						5
		151	153,022,238	153,022,238	Contract	6
				5,144,086	Contract	7
						8
		158	759,199	759,199	Contract	9
				5,097,032	Contract	10
						11
		158	287,281	287,281	Contract	12
				1,930,453	Contract	13
						14
				3,212,910	Contract	15
						16
						17
						18
						19
						20
						21
						22
						23
						24
						25
						26
						27
						28
						29
						30
	9,998,556		737,728,528	1,170,359,583		

**Attachment 12(1)(i)-5**

## **DTE ENERGY COMPANY Subsidiary Company Master Service Agreement**

This Agreement, effective as of April 2, 2007 by, between and among DTE Energy Company (DTE) and all of its utility and non-utility subsidiaries, as they may be created or dissolved from time to time. For the purposes of this Agreement, The Detroit Edison Company and Michigan Consolidated Gas Company are "utility" subsidiaries. Most other subsidiaries of DTE are "non-utility" subsidiaries. This Agreement supersedes the prior Agreement on this subject dated April 20, 2004.

DTE Energy Company is a diversified corporation that includes utility electric and gas utility operations along with various non-utility subsidiaries. The majority of its employees, resources and facilities are dedicated to the utility businesses. DTE recognizes that certain work transcends subsidiaries. DTE also recognizes the business need for subsidiaries' resources to be shared and utilized by one another in the normal course of business. At the same time, DTE understands that no subsidiary can be allowed to benefit from this access and use common employees, resources and facilities without proper reimbursement to the subsidiary maintaining ownership of said resources and assets. To that end, the parties to this agreement establish this policy that governs transactions between or among the various DTE subsidiaries.

1. DTE and its subsidiaries agree that no utility subsidiary will subsidize any other utility or non-utility subsidiary.
2. DTE and its subsidiaries agree to maintain accounting, control and record-keeping systems that will help ensure that all transactions between or among subsidiaries will be appropriately identified, valued, billed and charges therefor paid.

Non-compliance with the state regulatory policy and procedures pertaining to transactions covered by this agreement is not acceptable and will be expeditiously remediated. Any issues regarding non-compliance with applicable regulatory policy and procedures will be reported immediately to appropriate management. The duty of management is to resolve any issues promptly. Where any management discretion may be exercised, the resolution shall be in favor of the utility subsidiary for the benefit of its customers.

### **AGREEMENT TO FURNISH SERVICES**

Upon request and as available, a utility subsidiary shall furnish to a utility and/or non-utility subsidiary the products and services requested so long as providing them does not, in the sole judgment of the utility subsidiary, interfere with its primary obligation to provide utility services to the public. Non-utility subsidiaries may also be asked to furnish products and/or services to a subsidiary. General

corporate support services will be provided to all DTE subsidiaries by DTE Energy Corporate Services, LLC ("DECS").

The word "Recipient," when used in this Agreement, shall mean the DTE subsidiary that is receiving the product or service. The word "Provider," when used in this Agreement, shall mean the DTE subsidiary that is providing the product or service. The parties to this Agreement may render, and shall be appropriately compensated for, such products or services as agreed upon. Any such products or services shall be rendered subject to the terms and conditions of this Agreement.

The means by which DTE subsidiaries are to substantiate the scope and pricing parameters of particular agreements is through the use of a Contract, a Service Level Agreement, a Service Request Form or other appropriate documentation. The subsidiaries will determine which form of documentation fulfills their needs.

1. A Contract would be used to document a product or service arrangement of a broad nature that requires extensive description. A contract is usually between two parties and both parties will authorize the agreement. A subsidiary company contract is similar to a contract one would prepare with a third party company.
2. A Service Level Agreement (SLA) would be used to document a product or service arrangement of a broad nature that requires an average amount of description. As such, an SLA would often involve more than two subsidiaries and may require the authorization of the DTE Chief Executive Officer and/or other Senior Management representative on behalf of all the parties.
3. The Service Request Form (SRF) would be used to document a product or service arrangement that has a concise and specific nature. This is the simplest form of documentation that can be used to explain the nature of a subsidiary transaction.

## **CHARGES**

Charges for Utility Subsidiary Products and Services: For all products or services provided to non-utility subsidiaries by a utility subsidiary under this Agreement, the Recipient shall pay the Provider for the labor, materials, and other expenses pertinent to such product or service at the fully loaded cost, or fair market value, whichever is greater. For services provided by one utility subsidiary to another utility subsidiary, Recipient shall pay the Provider the fully loaded cost of the product or service.

Charges for Non-Utility Subsidiary Products and Services: For all products or services provided to utility subsidiaries by a non-utility subsidiary (except DECS)



under this Agreement, the Recipient shall pay the Provider for the labor, materials, and other expenses pertinent to such product or service at the fair market value thereof or 10% over the fully loaded cost, whichever is less. For all products or services provided by DECS to utility subsidiaries under this Agreement, the Recipient shall pay DECS for the labor, materials and other expenses pertinent to such product or service at the fair market value thereof or fully loaded cost, whichever is less. Except for products and services provided by DECS, service provided by one non-utility subsidiary to another non-utility subsidiary, Recipient shall pay the Provider the negotiated price for the product or service. For all products or services provided by DECS to non-utility subsidiaries, Recipient shall pay DECS for the labor, materials and other expenses at the fully loaded cost.

Labor: All charges for labor services under this Agreement that are cost based shall be fully loaded and include direct labor costs plus an amount necessary to cover benefits provided to the employees rendering the services.

Third Party Vendors: To minimize inter-subsidiary billing as much as possible, all statements from third party vendors for the provision of products or services that can be identified with a particular Recipient shall be addressed directly to that Recipient.

## **BILLING AND PAYMENT**

Billing Methods: For unique products or services provided under this Agreement, Provider will supply Recipient with an invoice for the charge(s) due. Recipient shall pay the Provider by the statement due date. The invoice shall be rendered on or about the same time each month for services provided in the previous month, and shall be accompanied by information sufficient to identify the type and amount of products and/or services received. In the event that the Provider cannot render a statement based upon actual data, it may render the statement based on estimated data with any reconciliation using actual data to be reflected in the next monthly statement.

For services of a generalized nature routinely provided under this Agreement, a direct assignment process will be used to charge the Recipient. The direct assignment process will involve creating a cost pool from the various corporate support functions within DECS. The pooled costs at the DECS level, in addition to DTE O&M expenses, will be assigned to subsidiaries that use DECS services, based upon approved assignment formulas. Direct assignment costs will be posted automatically to each subsidiary's ledger as expenses and as accounts payable to DECS. Separate invoicing is not considered necessary to the process. A reconciliation document will be prepared each month showing the total amount billed by DECS and the amounts allocated and billed to each of the subsidiaries. The invoicing process described here may be modified from time to time, as needed.

Payment Disputes: In the event that a Recipient contests any portion of a statement for products or services, the total amount shall nevertheless be paid by the due date. The Recipient must then notify the Provider in writing, also by the due date, specifying the disputed charge. If the Recipient and the Provider cannot resolve the dispute within thirty days after notice of a disputed charge, the matter shall be forwarded to the Vice President and Controller of DTE for resolution. The decision rendered by the Vice President and Controller shall be binding upon the subsidiaries.

Late Payment: In the event that the Recipient does not pay the total amount due, interest on the unpaid amount will accrue each month at the average monthly market rate for A2/P2 commercial paper while the amount remains unpaid.

### TERM

The term of this Agreement shall be period of one year from the date hereof and from year to year thereafter, unless superseded by a new agreement or revoked by the then current DTE Energy Company Chief Executive Officer or his designate.

### NEW PARTIES

Any corporation, company, partnership or other entity that is controlled, directly or indirectly, by DTE or one of its subsidiaries will automatically become a party to this Agreement for any transactions with DTE or its utility and non-utility subsidiaries.

**IN WITNESS WHEREOF**, the parties hereto have caused this Agreement to be executed by their duly authorized officers as of the day and year first above written.



---

Gerard M. Anderson  
President and Chief Operating Officer  
DTE Energy Company; and  
President and Chief Operating Officer  
DTE Energy Corporate Services, LLC; and  
President and Chief Operating Officer  
DTE Energy Resources



---

Robert C. Buckler  
President and Chief Operating Officer  
The Detroit Edison Company; and  
President and Chief Executive Officer  
Wolverine Energy Services, Inc.



---

Gerardo Norcia  
President  
Michigan Consolidated Gas Company



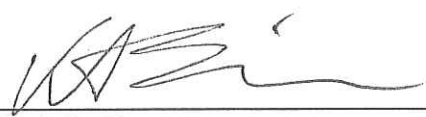
---

Steven Prelipp  
President  
DTE Gas Resources, Inc.



---

Dave E. Meador  
President  
Syndeco Realty Corporation



---

Knut A. Simonsen  
President  
DTE Energy Ventures, Inc.



**DTE ENERGY COMPANY  
Service Level Agreement  
Shared Services**

This Agreement, effective as of April 2, 2007 by, between and among DTE Energy Company (DTE) and all of its utility and non-utility subsidiaries. This Agreement supersedes the prior Agreement on this subject dated April 20, 2004.

**SHARED SERVICES**

Corporate support employees of DTE Energy Corporate Services, LLC ("DECS") provide shared services to handle the general corporate support function for all DTE subsidiaries. The corporate support function performed by any one employee or department within DECS is not solely for DECS. To the contrary, the corporate support function of DECS transcends all subsidiaries within DTE. To this end, the parties to this Agreement recognize the business need to operate in an efficient manner using shared services. The parties agree to accept appropriate responsibility for costs incurred by DECS as outlined in this Agreement, regardless of the legal organizational structure within which the charges are incurred.

**SCOPE**

The following organizations or categories of services and charges within DTE are within the scope of the shared services model: Accounting; Finance; Financial Services; Risk; Tax and Treasury; Assistant to the Chairman; Audit Services; Common Process Governance; Controller; Corporate Communications; Corporate & Government Affairs; Corporate Planning & Analysis; Corporate Safety; Corporate Secretary; Corporate Security; Corporate Services; Customer Services; Environmental Management & Resources; General Counsel; Human Resources; Information Technology; Investor Relations; Market Intelligence; Office of Compliance; Operating Systems; Regulatory Affairs; Regulated Marketing; Strategy and M&A; Technology Investments; and DTE O&M. The organizations or categories of services and charges listed above are not exclusive, and the definition of corporate support may be modified from time to time.

**CONTRACTS**

If a subsidiary requests that DECS procure goods or services on its behalf from a third party, DECS will act as the subsidiary's agent and a DECS employee will execute the necessary contract(s) in the name of the requesting subsidiary. For purposes of executing a contract on a subsidiary's behalf, DECS employees shall have the signature authority levels set forth in DTE Energy Policy GV6 (Signature Authority for Contracts and Financial Transactions) and in effect on the date the contract is executed.



## **CHARGES**

1. Direct charges may be incurred by DECS for specific categories of service requested by and for the benefit of a specific subsidiary within DTE. Direct charges would be incurred and billed pursuant to an authorizing document such as a contract or a service request form (SRF). Direct charges generally flow through the direct assignment process but, on an exception basis with management approval, can be charged directly to the affiliate entity that has requested the service.
2. Direct assignment includes those costs that are incurred by DECS for the general benefit of one or more subsidiaries of DTE. Most expenses for DECS' services will be charged using this direct assignment process and will be assigned using allocation methodologies that comply with generally accepted accounting principles and regulatory guidelines. These methodologies will be reviewed periodically to assure the continuing appropriateness of their application and parameters.

## **INVOICING**

The direct assignment process will involve creating a cost pool from the various corporate support functions within DECS. The pooled costs at the DECS level, in addition to DTE O&M expenses, will be assigned to subsidiaries that use DECS services, based upon approved assignment formulas. Direct assignment costs will be posted automatically to each subsidiary's ledger as expenses and as accounts payable to DECS. Separate invoicing is not considered necessary to the process. A reconciliation document will be prepared each month showing the total amount billed by DECS and the amounts allocated and billed to each of the subsidiaries. The invoicing process described here may be modified from time to time, as needed.

## **SETTLEMENT**

The DECS costs billed to subsidiaries must be settled on a monthly basis that will be facilitated through the use of Intercompany Loans.

## **DISPUTE RESOLUTION**

Any dispute concerning the propriety of any cost assignment should be communicated immediately in writing to the Manager responsible for overseeing the process. If the dispute cannot be resolved within thirty days after it has been raised, the matter shall be forwarded to the Vice President and Controller of DTE for resolution. The decision rendered by the Vice President and Controller or his/her designate shall be binding. The initiation of the dispute resolution

process will not be a reason to delay payment of any charges that have been assigned.

**TERM**

The term of this Agreement shall be a period of one year from the date hereof and from year to year thereafter, unless superseded by a new agreement or revoked by the then current DTE Energy Company Chief Executive Officer or his/her designate.

**NEW PARTIES**

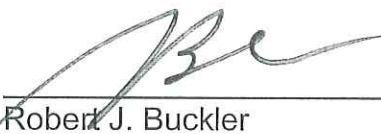
Any corporation, company, partnership or other entity that is controlled, directly or indirectly, by DTE or one of its subsidiaries will automatically become a party to this Agreement for any transactions with DTE or its utility and non-utility subsidiaries.

**IN WITNESS WHEREOF**, the parties hereto have caused this Agreement to be executed by their duly authorized officers as of the day and year first above written.



---

Gerard M. Anderson  
President and Chief Operating Officer  
DTE Energy Company; and  
President and Chief Operating Officer  
DTE Energy Corporate Services, LLC; and  
President and Chief Operating Officer  
DTE Energy Resources



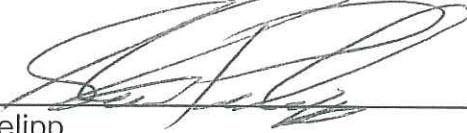
---

Robert J. Buckler  
President and Chief Operating Officer  
The Detroit Edison Company; and  
President and Chief Executive Officer  
Wolverine Energy Services, Inc.



---

Gerardo Norcia  
President  
Michigan Consolidated Gas Company



---

Steven Prelipp  
President  
DTE Gas Resources, Inc.



---

Dave E. Meador  
President  
Syndeco Realty Corporation



---

Knut A. Simonsen  
President  
DTE Energy Ventures, Inc.